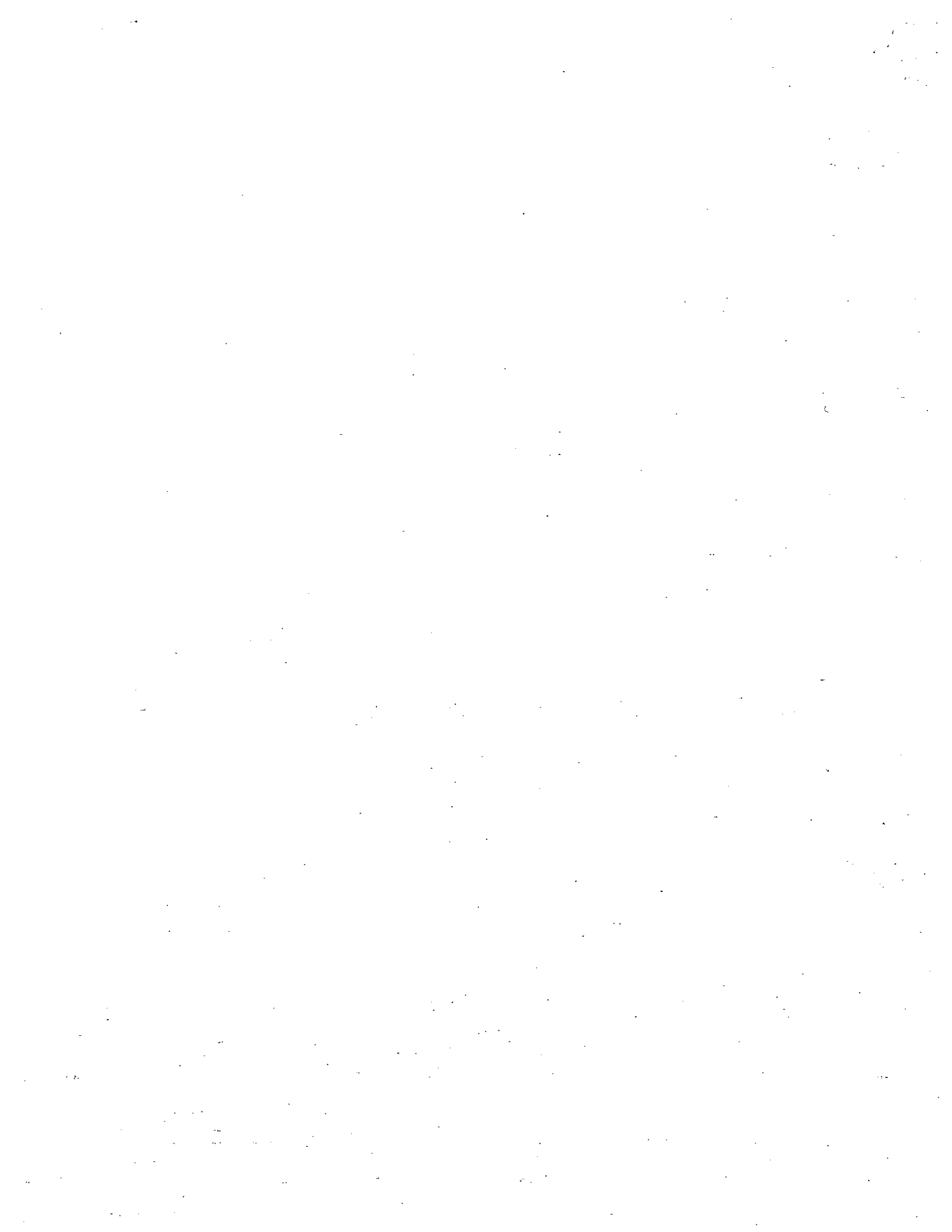


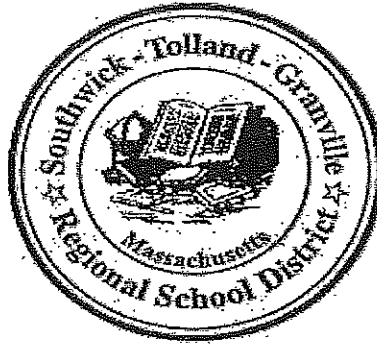
~~Standard~~
02/14
~~02/14~~
~~02/14~~
02/14

Teacher and Caseload Educator Evaluation Instrument

Negotiated 6/13/2012

- Teacher and Caseload Educator Evaluation Instrument
- Appendix A – MOU page 22
- Appendix B – Teacher Rubric
- Appendix C -- Specialized Instructional Support Personnel Rubric
- Appendix D -- Educator Evaluation Forms

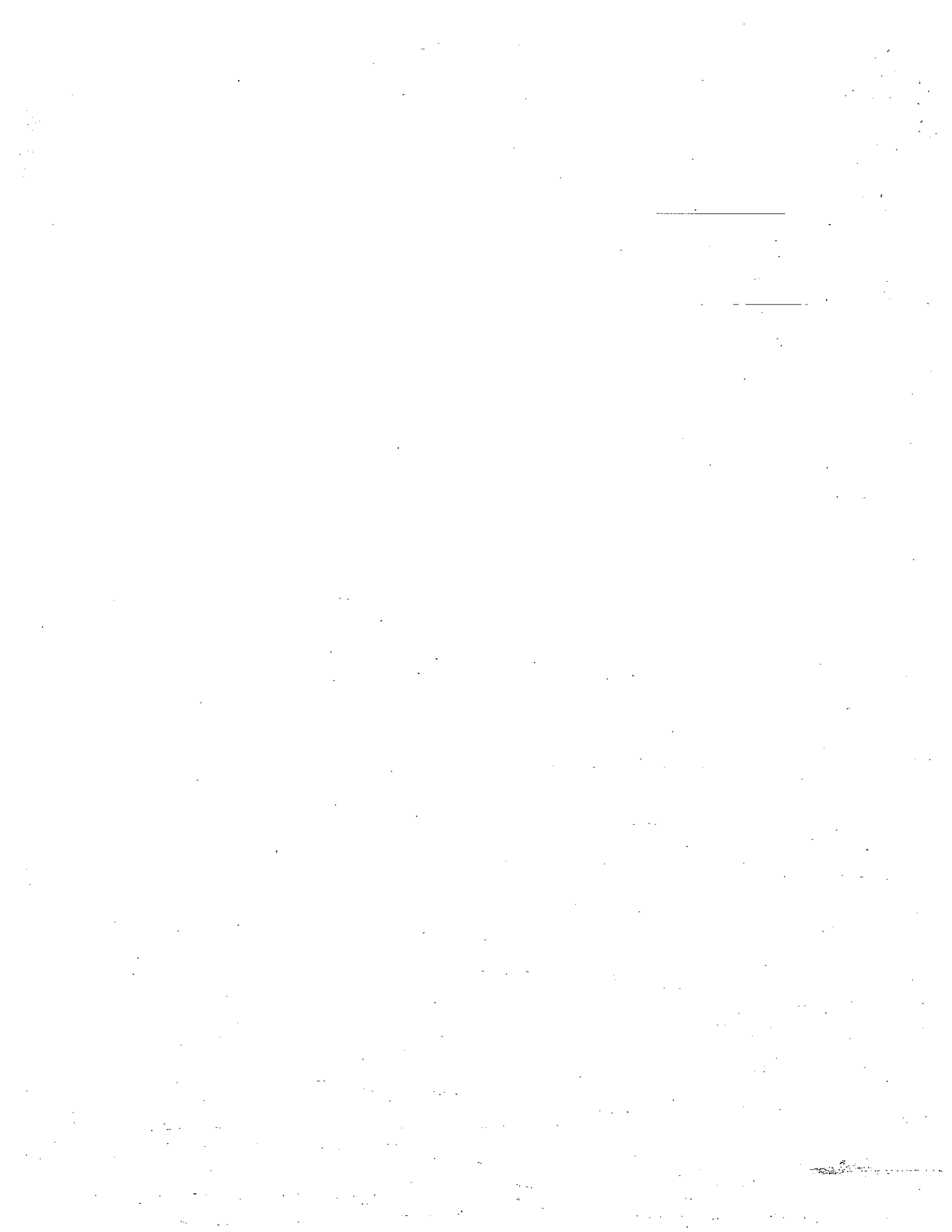




SOUTHWICK TOLLAND GRANVILLE REGIONAL SCHOOL DISTRICT

Teacher and Caseload Educator Evaluation Instrument

Negotiated 6/13/12



Teacher and Caseload Educator Contract Language

Table of Contents

Purpose of Educator Evaluation	4
Definitions	4
Evidence Used in Evaluation	8
Rubric	9
Evaluation Cycle: Training	9
Evaluation Cycle: Annual Orientation	9
Evaluation Cycle: Self-Assessment	10
Evaluation Cycle: Goal Setting and Educator Plan Development	11
Evaluation Cycle : Observation of Practice and Examination of Artifacts – Educators without PTS	11
Evaluation Cycle: Observation of Practice and Examination of Artifacts – Educators with PTS	12
Observations	12
Evaluation Cycle: Formative Assessment	13
Evaluation Cycle: Formative Evaluation for Two-Year Self-Directed Plans Only	14
Evaluation Cycle: Summative Evaluation	15
Educator Plans: General	16
Educator Plans: Developing Educator Plan	16
Educator Plans: Self-Directed Growth Plan	17
Educator Plans: Directed Growth Plan	17
Educator Plans: Improvement Plan	17
Timelines	19
Career Advancement	20
Rating Impact on Student Learning Growth	20
Using Student feedback in Educator Evaluation	20
Using Staff feedback in Educator Evaluation	20
Transition from Existing Evaluation System	20
General Provisions	21
Appendix A MOU	22
Appendix B Teacher Rubric	
Appendix C Specialized Instructional Support Personnel Rubric	
Appendix D Educator Evaluation Forms	

(1) **Purpose of Educator Evaluation**

- A) This contract language is locally negotiated and based on M.G.L., c.71, § 38; M.G.L. c.150E; the Educator Evaluation regulations, 603 CMR 35.00 et seq.; and the Model System for Educator Evaluation developed and which may be updated from time to time by the Department of Elementary and Secondary Education. See 603 CMR 35.02 (definition of model system). In the event of a conflict between this collective bargaining agreement and the governing laws and regulations, the laws and regulations will prevail.
- B) The regulatory purposes of evaluation are:
- i) To promote student learning, growth, and achievement by providing Educators with feedback for improvement, enhanced opportunities for professional growth, and clear structures for accountability, 603 CMR 35.01(2)(a);
 - ii) To provide a record of facts and assessments for personnel decisions, 35.01(2)(b);
 - iii) To ensure that every school committee has a system to enhance the professionalism and accountability of teachers and administrators that will enable them to assist all students to perform at high levels, 35.01(3); and
 - iv) To assure effective teaching and administrative leadership, 35.01(3).

(2) **Definitions (* indicates definition is generally based on 603 CMR 35.02)**

- A) ***Artifacts of Professional Practice:** Products of an Educator's work and student work samples that demonstrate the Educator's knowledge and skills with respect to specific performance standards.
- B) **Caseload Educator:** Educators who teach or counsel individual or small groups of students through consultation with the regular classroom teacher, for example, school nurses, guidance counselors, speech and language pathologists, and some reading specialists and special education teachers.
- C) **Classroom teacher:** Educators who teach preK-12 whole classes, and teachers of special subjects as such as art, music, library, and physical education. May also include special education teachers and reading specialists who teach whole classes.
- D) **Categories of Evidence:** Multiple measures of student learning, growth, and achievement, judgments based on observations and artifacts of professional practice, including unannounced observations of practice of any duration; and additional evidence relevant to one or more Standards of Effective Teaching Practice (603 CMR 35.03).
- E) ***District-determined Measures:** Measures of student learning, growth and achievement related to the Massachusetts Curriculum Frameworks, Massachusetts Vocational Technical Education Frameworks, or other relevant frameworks, that are comparable across grade or subject level district-wide. These measures may include, but shall not be limited to: portfolios approved commercial assessments and district-developed pre and post unit and course assessments, and capstone projects.
- F) ***Educator(s):** Inclusive term that applies to all classroom teachers and caseload educators, unless otherwise noted.
- G) ***Educator Plan:** The growth or improvement actions identified as part of each Educator's evaluation. The type of plan is determined by the Educator's career stage, overall performance

rating, and the rating of impact on student learning, growth and achievement. There shall be four types of Educator Plans:

- i) **Developing Educator Plan** shall mean a plan developed by the Educator and the Evaluator for one school year or less for an Educator without Professional Teacher Status (PTS); or, at the discretion of an Evaluator, for an Educator with PTS in a new assignment.
 - ii) **Self-Directed Growth Plan** shall mean a plan developed by the Educator for one or two school years for Educators with PTS who are rated proficient or exemplary.
 - iii) **Directed Growth Plan** shall mean a plan developed by the Educator and the Evaluator of one school year or less for Educators with PTS who are rated needs improvement.
 - iv) **Improvement Plan** shall mean a plan developed by the Evaluator of at least 30 calendar days and no more than one school year for Educators with PTS who are rated unsatisfactory with goals specific to improving the Educator's unsatisfactory performance. In those cases where an Educator is rated unsatisfactory near the close of a school year, the plan may include activities during the summer preceding the next school year.
- H) ***ESE:** The Massachusetts Department of Elementary and Secondary Education.
- I) ***Evaluation:** The ongoing process of defining goals and identifying, gathering, and using information as part of a process to improve professional performance (the "formative evaluation" and "formative assessment") and to assess total job effectiveness and make personnel decisions (the "summative evaluation").
- J) ***Evaluator:** Any person designated by a superintendent who has primary or supervisory responsibility for observation and evaluation. The superintendent is responsible for ensuring that all Evaluators have training in the principles of supervision and evaluation. Each Educator will have one primary Evaluator at any one time responsible for determining performance ratings.
- i) **Primary Evaluator** shall be the person who determines the Educator's performance ratings and evaluation.
 - ii) **Supervising Evaluator** shall be the person responsible for developing the Educator Plan, supervising the Educator's progress through formative assessments, evaluating the Educator's progress toward attaining the Educator Plan goals, and making recommendations about the evaluation ratings to the primary Evaluator at the end of the Educator Plan. The Supervising Evaluator may be the primary Evaluator or his/her designee.
 - iii) **Teaching Staff Assigned to More Than One Building:** Each Educator who is assigned to more than one building will be evaluated by the appropriate administrator where the individual is assigned most of the time. The principal of each building in which the Educator serves must review and sign the evaluation, and may add written comments. In cases where there is no predominate assignment, the superintendent will determine who the primary evaluator will be.
 - iv) **Notification:** The Educator shall be notified in writing of his/her primary Evaluator and supervising Evaluator, if any, at the outset of each new evaluation cycle. The Evaluator(s) may be changed upon notification in writing to the Educator.
- K) **Evaluation Cycle:** A five-component process that all Educators follow consisting of 1) Self-Assessment; 2) Goal-setting and Educator Plan development; 3) Implementation of the Plan; 4) Formative Assessment/Evaluation; and 5) Summative Evaluation.

- L) ***Experienced Educator:** An educator with Professional Teacher Status (PTS).
- M) ***Family:** Includes students' parents, legal guardians, foster parents, or primary caregivers.
- N) ***Formative Assessment:** The process used to assess progress towards attaining goals set forth in Educator plans, performance on standards, or both. This process may take place at any time(s) during the cycle of evaluation, but typically takes place at mid-cycle.
- O) ***Formative Evaluation:** An evaluation conducted at the end of Year 1 for an Educator on a 2-year Self-Directed Growth plan which is used to arrive at a rating on progress towards attaining the goals set forth in the Educator Plan, performance on Standards and Indicators of Effective Teaching Practice, or both.
- P) ***Goal:** A specific, actionable, and measurable area of improvement as set forth in an Educator's plan. A goal may pertain to any or all of the following: Educator practice in relation to Performance Standards, Educator practice in relation to indicators, or specified improvement in student learning, growth and achievement. Goals may be developed by individual Educators, by the Evaluator, or by teams, departments, or groups of Educators who have the same role.
- Q) ***Measurable:** That which can be classified or estimated in relation to a scale, rubric, or standards.
- R) **Multiple Measures of Student Learning:** Measures must include a combination of classroom, school and district assessments, student growth percentiles on state assessments, if state assessments are available, and student MEPA gain scores. This definition may be revised as required by regulations or agreement of the parties upon issuance of ESE guidance expected by July 2012.
- S) ***Observation:** A data gathering process that includes notes and judgments made during one or more classroom or worksite visits(s) of any duration by the Evaluator and may include examination of artifacts of practice including student work. An observation may occur in person or through video. Video observations will be done openly and with knowledge of the Educator. The parties agree to bargain the protocols of video observations should either party wish to adopt such practice. Classroom or worksite observations conducted pursuant to this article must result in feedback to the Educator. Normal supervisory responsibilities of department, building and district administrators will also cause administrators to drop in on classes and other activities in the worksite at various times as deemed necessary by the administrator. Carrying out these supervisory responsibilities, when they do not result in targeted and constructive feedback to the Educator, are not observations as defined in this Article.
- T) **Parties:** The parties to this agreement are the local school committee and the employee organization that represents the Educators covered by this agreement for purposes of collective bargaining ("Employee Organization/Association").
- U) ***Performance Rating:** Describes the Educator's performance on each performance standard and overall. There shall be four performance ratings:
- Exemplary: the Educator's performance consistently and significantly exceeds the requirements of a standard or overall. The rating of exemplary on a standard indicates that practice significantly exceeds proficient and could serve as a model of practice on that standard district-wide.
 - Proficient: the Educator's performance fully and consistently meets the requirements of a standard or overall. Proficient practice is understood to be fully satisfactory.

- Needs Improvement: the Educator's performance on a standard or overall is below the requirements of a standard or overall, but is not considered to be unsatisfactory at this time. Improvement is necessary and expected.
 - Unsatisfactory: the Educator's performance on a standard or overall has not significantly improved following a rating of needs improvement, or the Educator's performance is consistently below the requirements of a standard or overall and is considered inadequate, or both.

- V) ***Performance Standards:** Locally developed standards and indicators pursuant to M.G.L. c. 71, § 38 and consistent with, and supplemental to 603 CMR 35.00. The parties may agree to limit standards and indicators to those set forth in 603 CMR 35.03.

- W) ***Professional Teacher Status:** PTS is the status granted to an Educator pursuant to M.G.L. c. 71, § 41.

- X) **Rating of Educator Impact on Student Learning:** A rating of high, moderate or low based on trends and patterns of state assessments and district-determined measures. The parties will negotiate the process for using state and district-determined measures to arrive at an Educator's rating of impact on student learning, growth and achievement, using guidance and model contract language from ESE, expected by July 2012.

- Y) **Rating of Overall Educator Performance:** The Educator's overall performance rating is based on the Evaluator's professional judgment and examination of evidence of the Educator's performance against the four Performance Standards and the Educator's attainment of goals set forth in the Educator Plan, as follows:
 - i) Standard 1: Curriculum, Planning and Assessment
 - ii) Standard 2: Teaching All Students
 - iii) Standard 3: Family and Community Engagement
 - iv) Standard 4: Professional Culture
 - v) Attainment of Professional Practice Goal(s)
 - vi) Attainment of Student Learning Goal(s)

- Z) ***Rubric:** A scoring tool that describes characteristics of practice or artifacts at different levels of performance. The rubrics for Standards and Indicators of Effective Teaching Practice are used to rate Educators on Performance Standards, these rubrics consists of:
 - i) Standards: Describes broad categories of professional practice, including those required in 603 CMR 35.03
 - ii) Indicators: Describes aspects of each standard, including those required in 603 CMR 35.03
 - iii) Elements: Defines the individual components under each indicator
 - iv) Descriptors: Describes practice at four levels of performance for each element

- AA) ***Summative Evaluation:** An evaluation used to arrive at a rating on each standard, an overall rating, and as a basis to make personnel decisions. The summative evaluation includes the Evaluator's judgments of the Educator's performance against Performance Standards and the Educator's attainment of goals set forth in the Educator's Plan.

- BB) ***Superintendent:** The person employed by the school committee pursuant to M.G.L. c. 71 §59 and §59A. The superintendent is responsible for the implementation of 603 CMR 35.00.
- CC) ***Teacher:** An Educator employed in a position requiring a certificate or license as described in 603 CMR 7.04(3)(a, b, and d) and in the area of vocational education as provided in 603 CMR 4.00. Teachers may include, for example, classroom teachers, librarians, guidance counselors, or school nurses.
- DD) ***Trends in student learning:** At least two years of data from the district-determined measures and state assessments used in determining the Educator's rating on impact on student learning as high, moderate or low.

(3) **Evidence Used In Evaluation**

The following categories of evidence shall be used in evaluating each Educator:

- A) Multiple measures of student learning, growth, and achievement, which shall include:
 - i) Measures of student progress on classroom assessments that are aligned with the Massachusetts Curriculum Frameworks or other relevant frameworks and are comparable within grades or subjects in a school;
 - ii) At least two district-determined measures of student learning related to the Massachusetts Curriculum Frameworks or the Massachusetts Vocational Technical Education Frameworks or other relevant frameworks that are comparable across grades and/or subjects district-wide. These measures may include: portfolios, approved commercial assessments and district-developed pre and post unit and course assessments, and capstone projects. One such measure shall be the MCAS Student Growth Percentile (SGP) or Massachusetts English Proficiency Assessment gain scores, if applicable, in which case at least two years of data is required.
 - iii) Measures of student progress and/or achievement toward student learning goals set between the Educator and Evaluator for the school year or some other period of time established in the Educator Plan.
 - iv) For Educators whose primary role is not as a classroom teacher, the appropriate measures of the Educator's contribution to student learning, growth, and achievement set by the district. The measures set by the district should be based on the Educator's role and responsibility.
- B) Judgments based on observations and artifacts of practice including:
 - i) Unannounced observations of practice of any duration.
 - ii) Announced observation(s) for non-PTS Educators in their first year of practice in a school, Educators on Improvement Plans, and as determined by the Evaluator.
 - iii) Examination of Educator work products.
 - iv) Examination of student work samples.

- C) Evidence relevant to one or more Performance Standards, including but not limited to:
- i) Evidence compiled and presented by the Educator, including :
 - (a) Evidence of fulfillment of professional responsibilities and growth such as self-assessments, peer collaboration, professional development linked to goals in the Educator plans, contributions to the school community and professional culture;
 - (b) Evidence of active outreach to and engagement with families;
 - ii) Evidence of progress towards professional practice goal(s);
 - iii) Evidence of progress toward student learning outcomes goal(s).
 - iv) Student and Staff Feedback – see # 23-24, below; and
 - v) Any other relevant evidence from any source that the Evaluator shares with the Educator. Other relevant evidence could include information provided by other administrators such as the superintendent.

(4) Rubric

The rubrics are a scoring tool used for the Educator's self-assessment, the formative assessment, the formative evaluation and the summative evaluation. The districts may use either the rubrics provided by ESE or comparably rigorous and comprehensive rubrics developed or adopted by the district and reviewed by ESE.

(5) Evaluation Cycle: Training

- A) Prior to the implementation of the new evaluation process contained in this article, districts shall arrange training for all Educators, principals, and other evaluators that outlines the components of the new evaluation process and provides an explanation of the evaluation cycle. The district through the superintendent shall determine the type and quality of training based on guidance provided by ESE.
- B) By November 1st of the first year of this agreement, all Educators shall complete a professional learning activity about self-assessment and goal-setting satisfactory to the superintendent or principal. Any Educator hired after the November 1st date, and who has not previously completed such an activity, shall complete such a professional learning activity about self-assessment and goal-setting within three months of the date of hire. The district through the superintendent shall determine the type and quality of the learning activity based on guidance provided by ESE.

(6) Evaluation Cycle: Annual Orientation

- A) At the start of each school year, the superintendent, principal or designee shall conduct a meeting for Educators and Evaluators focused substantially on educator evaluation. The superintendent, principal or designee shall:
 - i) Provide an overview of the evaluation process, including goal setting and the educator plans.
 - ii) Provide all Educators with directions for obtaining a copy of the forms used by the district. These may be electronically provided.

- iii) The faculty meeting may be digitally recorded to facilitate orientation of Educators hired after the beginning of the school year.

(7) **Evaluation Cycle: Self-Assessment**

A) **Completing the Self-Assessment**

- i) The evaluation cycle begins with the Educator completing and submitting to the Primary or Supervising Evaluator a self-assessment by October 1st or within four weeks of the start of their employment at the school.
- ii) The self-assessment includes:
 - (a) An analysis of evidence of student learning, growth and achievement for students under the Educator's responsibility.
 - (b) An assessment of practice against each of the four Performance Standards of effective practice using the district's rubric.
 - (c) Proposed goals to pursue:
 - (1st) At least one goal directly related to improving the Educator's own professional practice.
 - (2nd) At least one goal directed related to improving student learning.

B) **Proposing the goals**

- i) Educators must consider goals for grade-level, subject-area, department teams, or other groups of Educators who share responsibility for student learning and results, except as provided in (ii) below. Educators may meet with teams to consider establishing team goals. Evaluators may participate in such meetings.
- ii) For Educators in their first year of practice, the Evaluator or his/her designee will meet with each Educator by October 1st (or within four weeks of the Educator's first day of employment if the Educator begins employment after September 15th) to assist the Educator in completing the self-assessment and drafting the professional practice and student learning goals which must include induction and mentoring activities.
- iii) Unless the Evaluator indicates that an Educator in his/her second or third years of practice should continue to address induction and mentoring goals pursuant to 603 CMR 7.12, the Educator may address shared grade level or subject area team goals.
- iv) For Educators with PTS and ratings of proficient or exemplary, the goals may be team goals. In addition, these Educators may include individual professional practice goals that address enhancing skills that enable the Educator to share proficient practices with colleagues or develop leadership skills.
- v) For Educators with PTS and ratings of needs improvement or unsatisfactory, the professional practice goal(s) must address specific standards and indicators identified for improvement. In addition, the goals may address shared grade level or subject area team goals.

(8) **Evaluation Cycle: Goal Setting and Development of the Educator Plan**

- A) Every Educator has an Educator Plan that includes, but is not limited to, one goal related to the improvement of practice; one goal for the improvement of student learning. The Plan also outlines actions the Educator must take to attain the goals established in the Plan and benchmarks to assess progress. Goals may be developed by individual Educators, by the Evaluator, or by teams, departments, or groups of Educators who have the similar roles and/or responsibilities. See Sections 15-19 for more on Educator Plans.
- B) To determine the goals to be included in the Educator Plan, the Evaluator reviews the goals the Educator has proposed in the Self-Assessment, using evidence of Educator performance and impact on student learning, growth and achievement based on the Educator's self-assessment and other sources that Evaluator shares with the Educator. The process for determining the Educator's impact on student learning, growth and achievement will be determined after ESE issues guidance on this matter. See #22, below.
- C) Educator Plan Development Meetings shall be conducted as follows:
 - i) Educators in the same school may meet with the Evaluator in teams and/or individually at the end of the previous evaluation cycle or by October 15th of the next academic year to develop their Educator Plan. Educators shall not be expected to meet during the summer hiatus.
 - ii) For those Educators new to the school, the meeting with the Evaluator to establish the Educator Plan must occur by October 15th or within six weeks of the start of their assignment in that school
 - iii) The Evaluator shall meet individually with Educators with PTS and ratings of needs improvement or unsatisfactory to develop professional practice goal(s) that must address specific standards and indicators identified for improvement. In addition, the goals may address shared grade level or subject matter goals.
- D) The Evaluator completes the Educator Plan by November 1st. The Educator shall sign the Educator Plan within 5 school days of its receipt and may include a written response. The Educator's signature indicates that the Educator received the plan in a timely fashion. The signature does not indicate agreement or disagreement with its contents. The Evaluator retains final authority over the content of the Educator's Plan.

(9) **Evaluation Cycle: Observation of Practice and Examination of Artifacts – Educators without PTS**

- A) In the first year of practice or first year assigned to a school:
 - i) The Educator shall have at least one announced observation during the school year using the protocol described in section 11B, below.
 - ii) The Educator shall have at least four unannounced observations during the school year.
- B) In their second and third years of practice or second and third years as a non-PTS Educator in the school:
 - i) The Educator shall have at least three unannounced observations during the school year.

(10) **Evaluation Cycle: Observation of Practice and Examination of Artifacts – Educators with PTS**

- A) The Educator whose overall rating is proficient or exemplary must have at least one unannounced observation during the evaluation cycle.
- B) The Educator whose overall rating is needs improvement must be observed according to the Directed Growth Plan during the period of Plan which must include at least two unannounced observations.
- C) The Educator whose overall rating is unsatisfactory must be observed according to the Improvement Plan which must include both unannounced and announced observation. The number and frequency of the observations shall be determined by the Evaluator, but in no case, for improvement plans of one year, shall there be fewer than one announced and four unannounced observations. For Improvement Plans of six months or fewer, there must be no fewer than one announced and two unannounced observations.

(11) **Observations**

The Evaluator's first observation of the Educator should take place by November 15. Observations required by the Educator Plan should be completed by May 15th. The Evaluator may conduct additional observations after this date.

The Evaluator is not required nor expected to review all the indicators in a rubric during an observation.

A) **Unannounced Observations**

- i) Unannounced observations may be in the form of partial or full-period classroom visitations, Instructional Rounds, Walkthroughs, Learning Walks, or any other means deemed useful by the Evaluator, principal, superintendent or other administrator.
- ii) The Educator will be provided with at least brief written feedback from the Evaluator within 3-5 school days of the observation. The written feedback shall be delivered to the Educator in person, by email, placed in the Educator's mailbox or mailed to the Educator's home.
- iii) Any observation or series of observations resulting in one or more standards judged to be unsatisfactory or needs improvement for the first time must be followed by at least one observation of at least 30 minutes in duration within 30 school days.

B) **Announced Observations**

- i) All non-PTS Educators in their first year in the school, PTS Educators on Improvement Plans and other educators at the discretion of the evaluator shall have at least one Announced Observation.
 - (a) The Evaluator shall select the date and time of the lesson or activity to be observed and discuss with the Educator any specific goal(s) for the observation.
 - (b) Within 5 school days of the scheduled observation, upon request of either the Evaluator or Educator, the Evaluator and Educator shall meet for a pre-observation conference. In lieu of a meeting, the Educator may inform the Evaluator in writing

of the nature of the lesson, the student population served, and any other information that will assist the Evaluator to assess performance

(1st) The Educator shall provide the Evaluator a draft of the lesson, student conference, IEP plan or activity. If the actual plan is different, the Educator will provide the Evaluator with a copy prior to the observation.

(2nd) The Educator will be notified as soon as possible if the Evaluator will not be able to attend the scheduled observation. The observation will be rescheduled with the Educator as soon as reasonably practical.

(c) Within 5 school days of the observation, the Evaluator and Educator shall meet for a post-observation conference. This timeframe may be extended due to unavailability on the part of either the Evaluator or the Educator, but shall be rescheduled within 24 hours if possible.

(d) The Evaluator shall provide the Educator with written feedback within 5 school days of the post-observation conference. For any standard where the Educator's practice was found to be unsatisfactory or needs improvement, the feedback must:

(1st) Describe the basis for the Evaluator's judgment.

(2nd) Describe actions the Educator should take to improve his/her performance.

(3rd) Identify support and/or resources the Educator may use in his/her improvement.

(4th) State that the Educator is responsible for addressing the need for improvement.

(12) Evaluation Cycle: Formative Assessment

- A) A specific purpose for evaluation is to promote student learning, growth and achievement by providing Educators with feedback for improvement. Evaluators are expected to make frequent unannounced visits to classrooms. Evaluators are expected to give targeted constructive feedback to Educators based on their observations of practice, examination of artifacts, and analysis of multiple measures of student learning, growth and achievement in relation to the Standards and Indicators of Effective Teaching Practice.
- B) Formative Assessment may be ongoing throughout the evaluation cycle but typically takes place mid-cycle when a Formative Assessment report is completed. For an Educator on a two-year Self-Directed Growth Plan, the mid-cycle Formative Assessment report is replaced by the Formative Evaluation report at the end of year one. See section 13, below.
- C) The Formative Assessment report provides written feedback and ratings to the Educator about his/her progress towards attaining the goals set forth in the Educator Plan, performance on Performance Standards and overall, or both
- D) No less than two weeks before the due date for the Formative Assessment report, which due date shall be established by the Evaluator with written notice to the Educator, the Educator shall provide to the Evaluator evidence of family outreach and engagement, fulfillment of professional responsibility and growth, and progress on attaining professional practice and student learning goals. The educator may provide to the evaluator additional evidence of the educator's performances against the four Performance Standards.

- E) Upon the request of either the Evaluator or the Educator, the Evaluator and the Educator will meet either before or after completion of the Formative Assessment Report.
- F) The Evaluator shall complete the Formative Assessment report and provide a copy to the Educator. All Formative Assessment reports must be signed by the Evaluator and delivered face-to-face, by email or to the Educator's school mailbox or home.
- G) The Educator may reply in writing to the Formative Assessment report within 5 school days of receiving the report.
- H) The Educator shall sign the Formative Assessment report by within 5 school days of receiving the report. The signature indicates that the Educator received the Formative Assessment report in a timely fashion. The signature does not indicate agreement or disagreement with its contents.
- I) As a result of the Formative Assessment Report, the Evaluator may change the activities in the Educator Plan.
- J) If the rating in the Formative Assessment report differs from the last summative rating the Educator received, the Evaluator may place the Educator on a different Educator Plan, appropriate to the new rating.

(13) Evaluation Cycle: Formative Evaluation for Two Year Self-Directed Plans Only

- A) Educators on two year Self-Directed Growth Educator Plans receive a Formative Evaluation report near the end of the first year of the two year cycle. The Educator's performance rating for that year shall be assumed to be the same as the previous summative rating unless evidence demonstrates a significant change in performance in which case the rating on the performance standards may change, and the Evaluator may place the Educator on a different Educator plan, appropriate to the new rating.
- B) The Formative Evaluation report provides written feedback and ratings to the Educator about his/her progress towards attaining the goals set forth in the Educator Plan, performance on each performance standard and overall, or both.
- C) No less than two weeks before the due date for the Formative Evaluation report, which due date shall be established by the Evaluator with written notice provided to the Educator, the Educator shall provide to the Evaluator evidence of family outreach and engagement, fulfillment of professional responsibility and growth, and progress on attaining professional practice and student learning goals. The educator may also provide to the evaluator additional evidence of the educator's performance against the four Performance Standards.
- D) The Evaluator shall complete the Formative Evaluation report and provide a copy to the Educator. All Formative Evaluation reports must be signed by the Evaluator and delivered face-to-face, by email or to the Educator's school mailbox or home.
- E) Upon the request of either the Evaluator or the Educator, the Evaluator and the Educator will meet either before or after completion of the Formative Evaluation Report.
- F) The Educator may reply in writing to the Formative Evaluation report within 5 school days of receiving the report.

- G) The Educator shall sign the Formative Evaluation report by within 5 school days of receiving the report. The signature indicates that the Educator received the Formative Evaluation report in a timely fashion. The signature does not indicate agreement or disagreement with its contents.
- H) As a result of the Formative Evaluation report, the Evaluator may change the activities in the Educator Plan.
- I) If the rating in the Formative Evaluation report differs from the last summative rating the Educator received, the Evaluator may place the Educator on a different Educator Plan, appropriate to the new rating.

(14) **Evaluation Cycle: Summative Evaluation**

- A) The evaluation cycle concludes with a summative evaluation report. For Educators on a one or two year Educator Plan, the summative report must be written and provided to the educator by May 15th.
- B) The Evaluator determines a rating on each standard and an overall rating based on the Evaluator's professional judgment, an examination of evidence against the Performance Standards and evidence of the attainment of the Educator Plan goals.
- C) The professional judgment of the primary evaluator shall determine the overall summative rating that the Educator receives.
- D) For an educator whose overall performance rating is exemplary or proficient and whose impact on student learning is low, the evaluator's supervisor shall discuss and review the rating with the evaluator and the supervisor shall confirm or revise the educator's rating. In cases where the superintendent serves as the primary evaluator, the superintendent's decision on the rating shall not be subject to review.
- E) The summative evaluation rating must be based on evidence from multiple categories of evidence. MCAS Growth scores shall not be the sole basis for a summative evaluation rating.
- F) To be rated proficient overall, the Educator shall, at a minimum, have been rated proficient on the Curriculum, Planning and Assessment and the Teaching All Students Standards of Effective Teaching Practice.
- G) No less than four weeks before the due date for the Summative Evaluation report, which due date shall be established by the Evaluator with written notice provided to the Educator, the Educator will provide to the Evaluator evidence of family outreach and engagement, fulfillment of professional responsibility and growth, and progress on attaining professional practice and student learning goals. The educator may also provide to the evaluator additional evidence of the educator's performance against the four Performance Standards.
- H) The Summative Evaluation report should recognize areas of strength as well as identify recommendations for professional growth.
- I) The Evaluator shall deliver a signed copy of the Summative Evaluation report to the Educator face-to-face, by email or to the Educator's school mailbox or home no later than May 15th.
- J) The Evaluator shall meet with the Educator rated needs improvement or unsatisfactory to discuss the summative evaluation. The meeting shall occur by June 1st.

- K) The Evaluator may meet with the Educator rated proficient or exemplary to discuss the summative evaluation, if either the Educator or the Evaluator requests such a meeting. The meeting shall occur by June 10th.
- L) Upon mutual agreement, the Educator and the Evaluator may develop the Self-Directed Growth Plan for the following two years during the meeting on the Summative Evaluation report.
- M) The Educator shall sign the final Summative Evaluation report by June 15th. The signature indicates that the Educator received the Summative Evaluation report in a timely fashion. The signature does not indicate agreement or disagreement with its contents.
- N) The Educator shall have the right to respond in writing to the summative evaluation which shall become part of the final Summative Evaluation report.
- O) A copy of the signed final Summative Evaluation report shall be filed in the Educator's personnel file.

(15) **Educator Plans – General**

- A) Educator Plans shall be designed to provide Educators with feedback for improvement, professional growth, and leadership; and to ensure Educator effectiveness and overall system accountability. The Plan must be aligned to the standards and indicators and be consistent with district and school goals.
- B) The Educator Plan shall include, but is not limited to:
 - i) At least one goal related to improvement of practice tied to one or more Performance Standards;
 - ii) At least one goal for the improvement the learning, growth and achievement of the students under the Educator's responsibility;
 - iii) An outline of actions the Educator must take to attain the goals and benchmarks to assess progress. Actions must include specified professional development and learning activities that the Educator will participate in as a means of obtaining the goals, as well as other support that may be suggested by the Evaluator or provided by the school or district. Examples may include but are not limited to coursework, self-study, action research, curriculum development, study groups with peers, and implementing new programs.
- C) It is the Educator's responsibility to attain the goals in the Plan and to participate in any trainings and professional development provided through the state, district, or other providers in accordance with the Educator Plan.

(16) **Educator Plans: Developing Educator Plan**

- A) The Developing Educator Plan is for all Educators without PTS, and, at the discretion of the Evaluator, Educators with PTS in new assignments.
- B) The Educator shall be evaluated at least annually.

(17) **Educator Plans: Self-Directed Growth Plan**

- A) A Two-year Self-Directed Growth Plan is for those Educators with PTS who have an overall rating of proficient or exemplary, and after 2013-2014 whose impact on student learning is moderate or high. A formative evaluation report is completed at the end of year 1 and a summative evaluation report at the end of year 2.
- B) A One-year Self-Directed Growth Plan is for those Educators with PTS who have an overall rating of proficient or exemplary, and after 2013-2014 whose impact on student learning is low. In this case, the Evaluator and Educator shall analyze the discrepancy between the summative evaluation rating and the rating for impact on student learning to seek to determine the cause(s) of the discrepancy.

(18) **Educator Plans: Directed Growth Plan**

- A) A Directed Growth Plan is for those Educators with PTS whose overall rating is needs improvement.
- B) The goals in the Plan must address areas identified as needing improvement as determined by the Evaluator.
- C) The Evaluator shall complete a summative evaluation for the Educator at the end of the period determined by the Plan, but at least annually, and in no case later than June 10th.
- D) For an Educator on a Directed Growth Plan whose overall performance rating is at least proficient, the Evaluator will place the Educator on a Self-Directed Growth Plan for the next Evaluation Cycle.
- E) For an Educator on a Directed Growth Plan whose overall performance rating is not at least proficient, the Evaluator will rate the Educator as unsatisfactory and will place the Educator on an Improvement Plan for the next Evaluation Cycle.

(19) **Educator Plans: Improvement Plan**

- A) An Improvement Plan is for those Educators with PTS whose overall rating is unsatisfactory.
- B) The parties agree that in order to provide students with the best instruction, it may be necessary from time to time to place an Educator whose practice has been rated as unsatisfactory on an Improvement Plan of no fewer than 30 calendar days and no more than one school year. In the case of an Educator receiving a rating of unsatisfactory near the close of one school year, the Improvement Plan may include activities that occur during the summer before the next school year begins.
- C) The Evaluator must complete a summative evaluation for the Educator at the end of the period determined by the Evaluator for the Plan.
- D) An Educator on an Improvement Plan shall be assigned a Supervising Evaluator (see definitions). The Supervising Evaluator is responsible for providing the Educator with guidance and assistance in accessing the resources and professional development outlined in the Improvement Plan. The primary evaluator may be the Supervising Evaluator.
- E) The Improvement Plan shall define the problem(s) of practice identified through the observations and evaluation and detail the improvement goals to be met, the activities the Educator must take to improve and the assistance to be provided to the Educator by the district.
- F) The Improvement Plan process shall include:
 - i) Within ten school days of notification to the Educator that the Educator is being placed on an Improvement Plan, the Evaluator shall schedule a meeting with the Educator to discuss

the Improvement Plan. The Evaluator will develop the Improvement Plan, which will include the provision of specific assistance to the Educator.

- ii) The Educator may request that a representative of the Employee Organization/Association attend the meeting(s).
- iii) If the Educator consents, the Employee Organization/Association will be informed that an Educator has been placed on an Improvement Plan.

G) The Improvement Plan shall:

- i) Define the improvement goals directly related to the performance standard(s) and/or student learning outcomes that must be improved;
- ii) Describe the activities and work products the Educator must complete as a means of improving performance;
- iii) Describe the assistance that the district will make available to the Educator;
- iv) Articulate the measurable outcomes that will be accepted as evidence of improvement;
- v) Detail the timeline for completion of each component of the Plan, including at a minimum a mid-cycle formative assessment report of the relevant standard(s) and indicator(s);
- vi) Identify the individuals assigned to assist the Educator which must include minimally the Supervising Evaluator, and,
- vii) Include the signatures of the Educator and Supervising Evaluator.

H) A copy of the signed Plan shall be provided to the Educator. The Educator's signature indicates that the Educator received the Improvement Plan in a timely fashion. The signature does not indicate agreement or disagreement with its contents.

I) Decision on the Educator's status at the conclusion of the Improvement Plan.

- i) All determinations below must be made no later than June 1. One of three decisions must be made at the conclusion of the Improvement Plan:
 - (a) If the Evaluator determines that the Educator has improved his/her practice to the level of proficiency, the Educator will be placed on a Self-Directed Growth Plan.
 - (b) In those cases where the Educator was placed on an Improvement Plan as a result of his/her summative rating at the end of his/her Directed Growth Plan, if the Evaluator determines that the Educator is making substantial progress toward proficiency, the Evaluator shall place the Educator on a Directed Growth Plan.
 - (c) In those cases where the Educator was placed on an Improvement Plan as a result of his/her Summative rating at the end of his/her Directed Growth Plan, if the Evaluator determines that the Educator is not making substantial progress toward proficiency, the Evaluator shall recommend to the superintendent that the Educator be dismissed.
 - (d) If the Evaluator determines that the Educator's practice remains at the level of unsatisfactory, the Evaluator shall recommend to the superintendent that the Educator be dismissed.

Timelines for Educator Evaluation Plans – DRAFT

Training for all staff by Nov 1, 2012 or within 3 months of hire (may be videotaped)
new cycle"

Notification to Educator of name of Evaluator "at the outset of each

Developing Educator Plan -- for all educators without PTS, and, at the discretion of the Evaluator, Educators with PTS in new assignments	Self-Directed Growth Plan PTS on Two Year Plan //One Year Plan	Directed Growth Plan PTS overall rating is needs improvement	Improvement Plan PTS overall rating is unsatisfactory	FORMS ²
Activity:	Completed By:			
Meeting for Educators conducted by Supt principal or designee	Start of each school year	Start of each school year		
Superintendent, principal or designee meets with evaluators and educators to explain evaluation process	September 15	September 15	September 15	
Evaluator meets with first-year educators to assist in self-assessment and goal setting process Educator submits self-assessment and proposed goals	October 1			Educator – Self-Assessment Part 1 and 2 Goal Setting Form
Evaluator meets with Educators in teams or individually to establish Educator Plans (Educator Plan may be established at Summative Evaluation Report meeting in prior school year)	October 15	October 15		Educator Plan Form Stud Learning Goal and Prof Practice Goal
Evaluator completes Educator Plans	November 1			
Evaluator should complete first observation of each Educator	November 15	November 15		Record of Evidence Form
Educator submits evidence on parent outreach, professional growth, progress on goals (and other standards, if desired) * *or four weeks before Formative Assessment Report date established by Evaluator	January 5*	June 1 of Year 1// Feb 1		Educator Collection of Evidence Form
Evaluator should complete mid-cycle Formative Assessment Reports for Educators on one-year Educator Plans	February 1	June 1 of Year 1// Feb 15		Formative Assessment /Formative Evaluation Report Form
Evaluator holds Formative Assessment Meetings if requested by either Evaluator or Educator	February 15	June 1 of Year 1		
Educator submits evidence on parent outreach, professional growth, progress on goals (and other standards, if desired) **or 4 weeks prior to Summative Evaluation Report date established by evaluator	April 20*	April 20		Summative Evaluation Report Form
Evaluator completes Summative Evaluation Report	May 15	May 15 of Year 2	At least annually and in no case later than June 10 th	
Evaluator meets with Educators whose overall Summative Evaluation ratings are Needs Improvement or Unsatisfactory	June 1	June 1 of Year 2		All determinations must be made no later than June 1
Evaluator meets with Educators whose ratings are proficient or exemplary at request of Evaluator or Educator	June 10	June 10 of Year 2		
Educator signs Summative Evaluation Report and adds response, if any within 5 school days of receipt	June 15	June 15 of Year 2		

¹ Educators on Plans of Less than One Year -- The timeline for educators on plans of less than one year will be established in the Educator Plan

² Educator Tracking Sheet is used to track the completion of each step throughout the educator's evaluation process. It will be completed by the educator in conjunction with his/her primary (and possibly supervising) evaluator.

21. Career Advancement

- A) In order to attain Professional Teacher Status, the Educator should achieve ratings of proficient or exemplary on each Performance Standard and overall. A principal considering making an employment decision that would lead to PTS for any Educator who has not been rated proficient or exemplary on each performance standard and overall on the most recent evaluation shall confer with the superintendent by May 1. The principal's decision is subject to review and approval by the superintendent.
- B) In order to qualify to apply for a teacher leader position, the Educator must have had a Summative Evaluation performance rating of proficient or exemplary for at least the previous two years.
- C) Educators with PTS whose summative performance rating is exemplary and, after 2013-14 whose impact on student learning is rated moderate or high, shall be recognized and rewarded with leadership roles, promotions, additional compensation, public commendation or other acknowledgement as determined by the district through collective bargaining where applicable.

22. Rating Impact on Student Learning Growth

ESE will provide model contract language and guidance on rating educator impact on student learning growth based on state and district-determined measures of student learning by July 15, 2012. Upon receiving this model contract language and guidance, the parties agree to bargain with respect to this matter.

23. Using Student feedback in Educator Evaluation

ESE will provide model contract language, direction and guidance on using student feedback in Educator Evaluation by June 30, 2013. Upon receiving this model contract language, direction and guidance, the parties agree to bargain with respect to this matter.

24. Using Staff feedback in Educator Evaluation

ESE will provide model contract language, direction and guidance on using staff feedback in Administrator Evaluation by June 30, 2013. Upon receiving this model contract language, direction and guidance, the parties agree to bargain with respect to this matter.

25. Transition from Existing Evaluation System

- A) The parties may agree that 50% or more of Educators in the district will be evaluated under the new procedures at the outset of this Agreement, and 50% or fewer will be evaluated under the former evaluation procedures for the first year of implementation of the new procedures in this Agreement.
- B) The parties shall agree on a process for identifying the Educator Plan that each Educator will be placed on during the Educator's first year being evaluated under the new procedures, providing that Educators who have received ratings of unsatisfactory or its equivalent in the prior year will be placed on Self-Directed Growth or Improvement Plans at the sole discretion of the Superintendent.
- C) The parties agree that to address the workload issue of Evaluators, during the first evaluation cycle under this Agreement in every school or department, the names of the Educators who are being

placed on Self-directed Growth Plans shall be literally or figuratively "put into a hat." The first fifty (50) percent drawn shall be on a 1-year Self-directed Growth Plan and the second fifty (50) percent shall be on a 2-year Plan.

- C) The existing evaluation system will remain in effect until the provisions set forth in this Article are implemented. The relevant timeframe for adopting and implementing new systems is set forth in 603 CMR 35.11(1).

26. General Provisions

- A) Only Educators who are licensed may serve as primary evaluators of Educators.
- B) Evaluators shall not make negative comments about the Educator's performance, or comments of a negative evaluative nature, in the presence of students, parents or other staff, except in the unusual circumstance where the Evaluator concludes that s/he must immediately and directly intervene. Nothing in this paragraph is intended to limit an administrator's ability to investigate a complaint, or secure assistance to support an Educator.
- C) The superintendent shall insure that Evaluators have training in supervision and evaluation, including the regulations and standards and indicators of effective teaching practice promulgated by ESE (35.03), and the evaluation Standards and Procedures established in this Agreement.
- D) Should there be a serious disagreement between the Educator and the Evaluator regarding an overall summative performance rating of unsatisfactory, the Educator may meet with the Evaluator's supervisor to discuss the disagreement. Should the Educator request such a meeting, the Evaluator's supervisor must meet with the Educator. The Evaluator may attend any such meeting at the discretion of the superintendent.
- D) The parties agree to establish a joint labor-management evaluation team which shall review the evaluation processes and procedures annually through the first three years of implementation and recommend adjustments to the parties.
- E) Violations of this article are subject to the grievance and arbitration procedures. The arbitrator shall determine whether there was substantial compliance with the totality of the evaluation process. When the evaluation process results in the termination or non-renewal of an Educator, then no financial remedy or reinstatement shall issue if there was substantial compliance.

Memorandum of Understanding

Page 4 # 2 Definitions

E) **District Determined Measures** At least two-district-determined measures of student learning related to the Massachusetts Curriculum Frameworks or other relevant frameworks that are comparable across grade or subject level district-wide. These measures may include, but shall not be limited to: portfolios approved commercial assessments and district-developed pre and post unit and course assessments, and capstone projects. District determined measures will be decided in the spring of 2012-2013 school year. In areas where there are no district determined measures, staff will be encouraged to adapt team and individual goals.

S) ***Observation:** A data gathering process that includes notes and judgments made during one or more classroom or worksite visits(s) of any duration by the Evaluator and may include examination of artifacts of practice including student work. An observation may occur in person or through video. Video observations will be done openly and with permission of the Educator in year one. The parties agree to bargain the protocols of video observations, in year two, should either party wish to adopt such practice. Classroom or worksite observations conducted pursuant to this article must result in feedback to the Educator. Normal supervisory responsibilities of department, building and district administrators will also cause administrators to drop in on classes and other activities in the worksite at various times as deemed necessary by the administrator. Carrying out these supervisory responsibilities, when they do not result in targeted and constructive feedback to the Educator, are not observations as defined in this Article

Page 11 # 8 Evaluation Cycle: Goal Setting and Development of the Educator Plan --

- A) There is an understanding that there will be one professional practice goal and one student learning goal

Page 11 # 9 Evaluation Cycle: Year 1 (2012-2013)

Woodland Elementary, Powder Mill Middle and High School:

- a. Educators on a Professional Performance Report will be placed on a Two-Year Self-Directed Growth Plan
- b. Educators who are scheduled for a full evaluation in 2011-2012 will be placed on a One-Year Self-Directed Growth Plan
- c. Educators without PTS will be placed on a One-Year Developing Educator Plan
- d. Educators who have indicated they will retire at the end of the 2013 school year will be placed on a One-Year Self-Directed Growth Plan

Granville:

- a. Granville educators who are on an off year will be placed on a One-Year Self-Directed Growth Plan
- b. Educators evaluated in the current year (2011-2012) will be placed on a Two-Year Self-Directed Growth Plan

Page 12 # 11 Observations .

- A) **Unannounced observations**

Administrators shall provide written feedback in 3-5 sentences for walkthroughs in the OASYS system. If both parties do not agree with the information, then the educator may provide additional artifacts to be reviewed for clarification.

A printed copy of the summative evaluation should be placed in the educators file as well as any rebuttals to the evaluation.

Every effort will be made to have face-to-face meetings to deliver summative evaluations and educator school mailboxes will be avoided at all costs.

Email is an acceptable form of communication.

The My Learning Plan OASYS system is a web based online educator evaluation and appraisal management system through My Learning Plan's website, located at www.MyLearningPlan.com. This system will be used to track, manage and report on the educator evaluation process. (Please note, forms will not always be exact replicas of the paper forms, but all attempts are made to preserve the intent of the form.)



Southwick Tolland Granville Regional School District

APPENDIX B

Teacher Rubrics





Standards and Indicators of Effective Teaching Practice: Rubric

Standard 1: Curriculum, Planning, and Assessment. *The teacher promotes the learning and growth of all students by providing high-quality and coherent instruction, designing and administering authentic and meaningful student assessments, analyzing student performance and growth data, using this data to improve instruction, providing students with constructive feedback on an ongoing basis, and continuously refining learning objectives.*

Indicator 1-A. Curriculum and Planning: Knows the subject matter well, has a good grasp of child development and how students learn, and designs effective and rigorous standards-based units of instruction consisting of well-structured lessons with measurable outcomes.		Proficient	Exemplary
I-A. Elements	Unsatisfactory	Needs Improvement	Proficient
I-A-1. Subject Matter Knowledge	Demonstrates limited knowledge of the subject matter and/or its pedagogy; relies heavily on textbooks or resources for development of the factual content. Rarely engages students in learning experiences focused on complex knowledge or skills in the subject.	Demonstrates factual knowledge of subject matter and the pedagogy it requires by sometimes engaging students in learning experiences around complex knowledge and skills in the subject.	Demonstrates sound knowledge and understanding of the subject matter and the pedagogy it requires by consistently engaging students in learning experiences that enable them to acquire complex knowledge and skills in the subject.
I-A-2. Child and Adolescent Development	Demonstrates little or no knowledge of developmental levels of students this age or differences in how students learn. Typically develops one learning experience for all students that do not enable most students to meet the intended outcomes.	Demonstrates knowledge of developmental levels of students this age but does not identify developmental levels and ways of learning among the students in the class and/or develops learning experiences that enable some, but not all, students to move toward meeting intended outcomes.	Demonstrates expert knowledge of the developmental levels of the teacher's own students and students in this grade or subject more generally and uses this knowledge to differentiate and expand learning experiences that enable all students to make significant progress toward meeting stated outcomes. Is able to model this element.



Standards and Indicators of Effective Teaching Practice: Rubric

I-A. Elements	Unsatisfactory	Needs Improvement	Proficient	Exemplary
I-A-3. Rigorous Standards-Based Unit Design	Plans individual lessons rather than units of instruction, or designs units of instruction that are not aligned with state standards/ local curricula, lack measurable outcomes, and/or include tasks that mostly rely on lower level thinking skills.	Designs units of instruction that address some knowledge and skills defined in state standards/local curricula, but some student outcomes are poorly defined and/or tasks rarely require higher-order thinking skills.	Designs units of instruction with measurable outcomes and challenging tasks requiring higher-order thinking skills that enable students to learn the knowledge and skills defined in state standards/local curricula.	Designs integrated units of instruction with measurable, accessible outcomes and challenging tasks requiring higher-order thinking skills that enable students to learn and apply the knowledge and skills defined in state standards/local curricula. Is able to model this element.
I-A-4. Well-Structured Lessons	Develops lessons with inappropriate student engagement strategies, pacing, sequence, activities, materials, resources, and/or grouping for the intended outcome or for the students in the class.	Develops lessons with only some elements of appropriate student engagement strategies, pacing, sequence, activities, materials, resources, and grouping.	Develops well-structured lessons with challenging, measurable objectives and appropriate student engagement strategies, pacing, sequence, activities, materials, and resources, technologies, and grouping.	Develops well-structured and highly engaging lessons with challenging, measurable objectives and appropriate student engagement strategies, pacing, sequence, activities, materials, resources, technologies, and grouping to attend to every student's needs. Is able to model this element.



Standards and Indicators of Effective Teaching Practice: Rubric

Indicator I-B. Assessment: Uses a variety of informal and formal methods of assessments to measure student learning, growth, and understanding to develop differentiated and enhanced learning experiences and improve future instruction.				
I-B. Elements	Unsatisfactory	Needs Improvement	Proficient	Exemplary
I-B-1. Variety of Assessment Methods	Administers only the assessments required by the school and/or measures only point-in-time student achievement.	May administer some informal and/or formal assessments to measure student learning but rarely measures student progress toward achieving state/local standards.	Designs and administers a variety of informal and formal methods and assessments, including common interim assessments, to measure each student's learning, growth, and progress toward achieving state/local standards.	Uses an integrated, comprehensive system of informal and formal assessments, including common interim assessments, to measure student learning, growth, and progress toward achieving state/local standards. Is able to model this element.
I-B-2. Adjustment to Practice	Makes few adjustments to practice based on formal and informal assessments.	May organize and analyze some assessment results but only occasionally adjusts practice or modifies future instruction based on the findings.	Organizes and analyzes results from a variety of assessments to determine progress toward intended outcomes and uses these findings to adjust practice and identify and/or implement appropriate differentiated interventions and enhancements for students.	Organizes and analyzes results from a comprehensive system of assessments to determine progress toward intended outcomes and frequently uses these findings to adjust practice and identify and/or implement appropriate differentiated interventions and enhancements for individuals and groups of students and appropriate modifications of lessons and units. Is able to model this element.

Adopting standards



Standards and Indicators of Effective Teaching Practice: Rubric

Indicator I-C: Analysis: Analyzes data from assessments, draws conclusions, and shares them appropriately.				
I-C Elements	Unsatisfactory	Needs Improvement	Proficient	Exemplary
I-C-1. Analysis and Conclusions	Does not draw conclusions from student data beyond completing minimal requirements such as grading for report cards.	Draws conclusions from a limited analysis of student data to inform student grading and promotion decisions.	Individually and with colleagues, draws appropriate conclusions from a thorough analysis of a wide range of assessment data to improve student learning.	Individually and with colleagues, draws appropriate, actionable conclusions from a thorough analysis of a wide range of assessment data that improve short- and long-term instructional decisions. Is able to model this element.
I-C-2. Sharing Conclusions With Colleagues	Rarely shares with colleagues conclusions about student progress and/or rarely seeks feedback.	Only occasionally shares with colleagues conclusions about student progress and/or only occasionally seeks feedback from them about practices that will support improved student learning.	Regularly shares with appropriate colleagues (e.g., general education, special education, and English learner staff) conclusions about student progress and seeks feedback from them about instructional or assessment practices that will support improved student learning.	Establishes and implements a schedule and plan for regularly sharing with all appropriate colleagues conclusions and insights about student progress. Seeks and applies feedback from them about practices that will support improved student learning. Is able to model this element.
I-C-3. Sharing Conclusions With Students	Provides little or no feedback on student performance except through grades or report of task completion, or provides inappropriate feedback that does not support students to improve their performance.	Provides some feedback about performance beyond grades but rarely shares strategies for students to improve their performance toward objectives.	Based on assessment results, provides descriptive feedback and engages students and families in constructive conversation that focuses on how students can improve their performance.	Establishes early, constructive feedback loops with students and families that create a dialogue about performance, progress, and improvement. Is able to model this element.



Standards and Indicators of Effective Teaching Practice: Rubric

Standard II: Teaching All Students. *The teacher promotes the learning and growth of all students through instructional practices that establish high expectations; create a safe and effective classroom environment, and demonstrate cultural proficiency.*

Indicator II-A. Instruction: Uses instructional practices that reflect high expectations regarding content and quality of effort and work; engage all students; and are personalized to accommodate diverse learning styles, needs, interests, and levels of readiness.				
II-A. Elements	Unsatisfactory	Needs Improvement	Proficient	Exemplary
II-A-1. Quality of Effort and Work	Establishes no or low expectations around quality of work and effort and/or offers few supports for students to produce quality work or effort.	May state high expectations for quality and effort, but provides few exemplars and rubrics, limited guided practice, and/or few other supports to help students know what is expected of them; may establish inappropriately low expectations for quality and effort.	Consistently defines high expectations for the quality of student work and the perseverance and effort required to produce it; often provides exemplars, rubrics, and guided practice.	Consistently defines high expectations for quality work and effort and effectively supports students to set high expectations for each other to persevere and produce high-quality work. Is able to model this element.
II-A-2. Student Engagement	Uses instructional practices that leave most students uninvolved and/or passive participants.	Uses instructional practices that motivate and engage some students but leave others uninvolved and/or passive participants.	Consistently uses instructional practices that are likely to motivate and engage most students during the lesson.	Consistently uses instructional practices that typically motivate and engage most students both during the lesson and during independent work and home work. Is able to model this element.
II-A-3. Meeting Diverse Needs	Uses limited and/or inappropriate practices to accommodate differences.	May use some appropriate practices to accommodate differences, but fails to address an adequate range of differences.	Uses appropriate practices, including tiered instruction and scaffolds, to accommodate differences in learning styles, needs, interests, and levels of readiness, including those of students with disabilities and English learners.	Uses a varied repertoire of practices to create structured opportunities for each student to meet or exceed state standards/local curriculum and behavioral expectations. Is able to model this element.



Standards and Indicators of Effective Teaching Practice: Rubric

Indicator II-B. Learning Environment: Creates and maintains a safe and collaborative learning environment that motivates students to take academic risks, challenge themselves, and claim ownership of their learning.				
II-B. Elements	Unsatisfactory	Needs Improvement	Proficient	Exemplary
II-B-1. Safe Learning Environment	Maintains a physical environment that is unsafe or does not support student learning. Uses inappropriate or ineffective rituals, routines, and/or responses to reinforce positive behavior or respond to behaviors that interfere with students' learning.	May create and maintain a safe physical environment but inconsistently maintains rituals, routines, and responses needed to prevent and/or stop behaviors that interfere with all students' learning.	Uses rituals, routines, and appropriate responses that create and maintain a safe physical and intellectual environment where students take academic risks and most behaviors that interfere with learning are prevented.	Uses rituals, routines, and proactive responses that create and maintain a safe physical and intellectual environment where students take academic risks and play an active role—individually and collectively—in preventing behaviors that interfere with learning. Is able to model this element.
II-B-2. Collaborative Learning Environment	Makes little effort to teach interpersonal, group, and communication skills or facilitate student work in groups, or such attempts are ineffective.	Teaches some interpersonal, group, and communication skills and provides some opportunities for students to work in groups.	Develops students' interpersonal, group, and communication skills and provides opportunities for students to learn in groups with diverse peers.	Teaches and reinforces interpersonal, group, and communication skills so that students seek out their peers as resources. Is able to model this practice.
II-B-3. Student Motivation	Directs all learning experiences, providing few, if any, opportunities for students to take academic risks or challenge themselves to learn.	Creates some learning experiences that guide students to identify needs, ask for support, and challenge themselves to take academic risks.	Consistently creates learning experiences that guide students to identify their strengths, interests, and needs; ask for support when appropriate; take academic risks; and challenge themselves to learn.	Consistently supports students to identify strengths, interests, and needs; ask for support; take risks; challenge themselves; set learning goals; and monitor their own progress. Models these skills for colleagues.



Standards and Indicators of Effective Teaching Practice: Rubric

Indicator II-C. Cultural Proficiency: Actively creates and maintains an environment in which students' diverse backgrounds, identities, strengths, and challenges are respected.				
II-C. Elements	Unsatisfactory	Needs Improvement	Proficient	Exemplary
II-C-1. Respects Differences	Establishes an environment in which students demonstrate limited respect for individual differences.	Establishes an environment in which students generally demonstrate respect for individual differences	Consistently uses strategies and practices that are likely to enable students to demonstrate respect for and affirm their own and others' identity, language, strengths, and challenges.	Establishes an environment in which students respect and affirm their own and others' differences and are supported to share and explore differences and similarities related to background, identity, language, strengths, and challenges. Is able to model this practice.
II-C-2. Maintains Respectful Environment	Minimizes or ignores conflicts and/or responds in inappropriate ways.	Anticipates and responds appropriately to some conflicts or misunderstandings but ignores and/or minimizes others.	Anticipates and responds appropriately to conflicts or misunderstandings arising from differences in backgrounds, languages, and identities.	Anticipates and responds appropriately to conflicts or misunderstandings arising from differences in backgrounds, languages, and identities in ways that lead students to be able to do the same independently. Is able to model this practice.



Standards and Indicators of Effective Teaching Practice: Rubric

Indicator II-D. Expectations: Plans and implements lessons that set clear and high expectations and also make knowledge accessible for all students.				
II-D. Elements	Unsatisfactory	Needs Improvement	Proficient	Exemplary
II-D-1. Clear Expectations	Does not make specific academic and behavior expectations clear to students.	May announce and post classroom academic and behavior rules and consequences, but inconsistently or ineffectively enforces them.	Clearly communicates and consistently enforces specific standards for student work, effort, and behavior.	Clearly communicates and consistently enforces specific standards for student work, effort, and behavior so that most students are able to describe them and take ownership of meeting them. Is able to model this element.
II-D-2. High Expectations	Gives up on some students or communicates that some cannot master challenging material.	May tell students that the subject or assignment is challenging and that they need to work hard but does little to counteract student misconceptions about innate ability.	Effectively models and reinforces ways that students can master challenging material through effective effort, rather than having to depend on innate ability.	Effectively models and reinforces ways that students can consistently master challenging material through effective effort. Successfully challenges students' misconceptions about innate ability. Is able to model this element.
II-D-3. Access to Knowledge	Rarely adapts instruction, materials, and assessments to make challenging material accessible to all students.	Occasionally adapts instruction, materials, and assessments to make challenging material accessible to all students.	Consistently adapts instruction, materials, and assessments to make challenge to all students, including English learners and students with disabilities.	Individually and with colleagues, consistently adapts instruction, materials, and assessments to make challenging material accessible to all students, including English learners and students with disabilities. Is able to model this element.



Standards and Indicators of Effective Teaching Practice: Rubric

Standard III: Family and Community Engagement. *The teacher promotes the learning and growth of all students through effective partnerships with families, caregivers, community members, and organizations.*

Indicator III-A. Engagement: Welcomes and encourages every family to become active participants in the classroom and school community.				
III-A. Elements	Unsatisfactory	Needs Improvement	Proficient	Exemplary
III-A-1. Parent/Family Engagement	Does not welcome families to become participants in the classroom and school community or actively discourages their participation.	Makes limited attempts to involve families in school and/or classroom activities, meetings, and planning.	Uses a variety of strategies to support every family to participate actively and appropriately in the classroom and school community.	Successfully engages most families and sustains their active and appropriate participation in the classroom and school community. Is able to model this element.

Indicator III-B. Collaboration: Collaborates with families to create and implement strategies for supporting student learning and development both at home and at school.				
III-B. Elements	Unsatisfactory	Needs Improvement	Proficient	Exemplary
III-B-1. Learning Expectations	Does not inform parents about learning or behavior expectations.	Sends home only a list of classroom rules and the learning outline or syllabus for the year.	Consistently provides parents with clear, user-friendly expectations for student learning and behavior.	Successfully conveys to most parents student learning and behavior expectations. Is able to model this element.
III-B-2. Curriculum Support	Rarely, if ever, communicates with parents on ways to support children at home or at school.	Sends home occasional suggestions on how parents can support children at home or at school.	Regularly updates parents on curriculum throughout the year and suggests strategies for supporting learning at school and home, including appropriate adaptation for students with disabilities or limited English proficiency.	Successfully prompts most families to use one or more of the strategies suggested for supporting learning at school and home and seeks out evidence of their impact. Is able to model this element.



Standards and Indicators of Effective Teaching Practice: Rubric

Indicator III-C. Communication: Engages in regular, two-way, and culturally proficient communication with families about student learning and performance.				
III-C. Elements	Unsatisfactory	Needs Improvement	Proficient	Exemplary
III-C-1. Two-Way Communication	Rarely communicates with families except through report cards; rarely solicits or responds promptly and carefully to communications from families.	Relies primarily on newsletters and other one-way media and usually responds promptly to communications from families.	Regularly uses two-way communication with families about student performance and learning and responds promptly and carefully to communications from families.	Regularly uses a two-way system that supports frequent, proactive, and personalized communication with families about student performance and learning. Is able to model this element.
III-C-2. Culturally Proficient Communication	Makes few attempts to respond to different family cultural norms and/or responds inappropriately or disrespectfully.	May communicate respectfully and make efforts to take into account different families' home language, culture, and values, but does so inconsistently or does not demonstrate understanding and sensitivity to the differences.	Always communicates respectfully with families and demonstrates understanding of and sensitivity to different families' home language, culture, and values.	Always communicates respectfully with families and demonstrates understanding and appreciation of different families' home language, culture, and values. Is able to model this element.



Standards and Indicators of Effective Teaching Practice: Rubric

Standard IV: Professional Culture. *The teacher promotes the learning and growth of all students through ethical, culturally proficient, skilled, and collaborative practice.*

Indicator IV-A. Reflection: Demonstrates the capacity to reflect on and improve the educator's own practice, using informal means as well as meetings with teams and work groups to gather information, analyze data, examine issues, set meaningful goals, and develop new approaches in order to improve teaching and learning.		Proficient	Exemplary
IV-A. Elements	Unsatisfactory	Needs Improvement	Proficient
IV-A-1. Reflective Practice	Demonstrates limited reflection on practice and/or use of insights gained to improve practice.	May reflect on the effectiveness of lessons/ units and interactions with students but not with colleagues and/or rarely uses insights to improve practice.	Regularly reflects on the effectiveness of lessons, units, and interactions with students, both individually and with colleagues, and uses and shares with colleagues, insights gained to improve practice and student learning. Is able to model this element.
IV-A-2. Goal Setting	Generally, participates passively in the goal-setting process and/or proposes goals that are vague or easy to reach.	Proposes goals that are sometimes vague or easy to achieve and/or bases goals on a limited self-assessment and analysis of student learning data.	Proposes challenging, measurable professional practice, team, and student learning goals that are based on thorough self-assessment and analysis of student learning data. Is able to model this element.



Standards and Indicators of Effective Teaching Practice: Rubric

Indicator IV-B. Professional Growth: Actively pursues professional development and learning opportunities to improve quality of practice or build the expertise and experience to assume different instructional and leadership roles.				
IV-B. Elements	Unsatisfactory	Needs Improvement	Proficient	Exemplary
IV-B-1. Professional Learning and Growth	Participates in few, if any, professional development and learning opportunities to improve practice and/or applies little new learning to practice.	Participates only in required professional development activities and/or inconsistently or inappropriately applies new learning to improve practice.	Consistently seeks out and applies, when appropriate, ideas for improving practice from supervisors, colleagues, professional development activities, and other resources to gain expertise and/or assume different instruction and leadership responsibilities.	Consistently seeks out professional development and learning opportunities that improve practice and build expertise of self and other educators in instruction and leadership. Is able to model this element.

Indicator IV-C. Collaboration: Collaborates effectively with colleagues on a wide range of tasks.				
IV-C. Elements	Unsatisfactory	Needs Improvement	Proficient	Exemplary
IV-C-1. Professional Collaboration	Rarely and/or ineffectively collaborates with colleagues; conversations often lack focus on improving student learning.	Does not consistently collaborate with colleagues in ways that support productive team effort.	Consistently and effectively collaborates with colleagues in such work as developing standards-based units, examining student work, analyzing student performance, and planning appropriate intervention.	Supports colleagues to collaborate in areas such as developing standards-based units, examining student work, analyzing student performance, and planning appropriate intervention. Is able to model this element.



Standards and Indicators of Effective Teaching Practice: Rubric

Indicator IV-D. Decision-Making: Becomes involved in school wide decision making, and takes an active role in school improvement planning.				
IV-D. Elements	Unsatisfactory	Needs Improvement	Proficient	Exemplary
IV-D-1, Decision-Making	Participates in planning and decision making at the school, department, and/or grade level only when asked and rarely contributes relevant ideas or expertise.	May participate in planning and decision making at the school, department, and/or grade level but rarely contributes relevant ideas or expertise.	Consistently contributes relevant ideas and expertise to planning and decision making at the school, department, and/or grade level.	I In planning and decision-making at the school, department, and/or grade level, consistently contribute ideas and expertise that are critical to school improvement efforts. Is able to model this element.

Indicator IV-E. Shared Responsibility: Shares responsibility for the performance of all students within the school.				
IV-E. Elements	Unsatisfactory	Needs Improvement	Proficient	Exemplary
IV-E-1, Shared Responsibility	Rarely reinforces school wide behavior and learning expectations for all students and/or makes a limited contribution to their learning by sharing responsibility for meeting their needs.	Within and beyond the classroom, inconsistently reinforces school wide behavior and learning expectations for all students, and/or makes a limited contribution to their learning by inconsistently sharing responsibility for meeting their needs.	Within and beyond the classroom, consistently reinforces school wide behaviors and learning expectations for all students, and contributes to their learning by sharing responsibility for meeting their needs.	Individually and with colleagues develops strategies and actions that contribute to the learning and productive behavior of all students at the school. Is able to model this element.



Standards and Indicators of Effective Teaching Practice: Rubric

Indicator IV-F. Professional Responsibilities: Is ethical and reliable, and meets routine responsibilities consistently.				
IV-F. Elements	Unsatisfactory	Needs Improvement	Proficient	Exemplary
IV-F-1. Judgment	Demonstrates poor judgment and/or discloses confidential student information inappropriately.	Sometimes demonstrates questionable judgment and/or inadvertently shares confidential information.	Demonstrates sound judgment reflecting integrity, honesty, fairness, and trustworthiness and protects student confidentiality appropriately.	Demonstrates sound judgment and acts appropriately to protect student confidentiality, rights and safety. Is able to model this element.
IV-F-2. Reliability & Responsibility	Frequently misses or is late to assignments, makes errors in records, and/or misses paperwork deadlines; frequently late or absent.	Occasionally misses or is late to assignments, completes work late, and/or makes errors in records.	Consistently fulfills professional responsibilities; is consistently punctual and reliable with paperwork, duties, and assignments; and is rarely late or absent from school.	Consistently fulfills all professional responsibilities to high standards. Is able to model this element.





Southwick Tolland Granville Regional School District

APPENDIX C

*Specialized Instructional Support Personnel Rubric

**Educators in professional support roles such as School Counselors, school psychologists, school nurses intended to be used for educators who provide direct services such as education, therapy, counseling, assessment, and diagnosis of students, as well as educators who may provide indirect support to students through consultation to and collaboration with teachers, administrators, and other colleagues*

Standard 1: Curriculum, Planning, and Assessment. *promotes the learning and growth of all students by providing high-quality and coherent instruction, designing and administering authentic and meaningful student assessments, analyzing student performance and growth data, using this data to improve instruction, providing students with constructive feedback on an ongoing basis, and continuously refining learning objectives.*

Indicator 1-A. Curriculum and Planning: Has strong knowledge specific to subject matter and/or professional responsibility, has a good grasp of child development and how students learn, and designs effective and rigorous plans for support consisting of well-structured lessons with measurable outcomes.				
I-A. Elements	Unsatisfactory	Needs Improvement	Proficient	Exemplary
I-A-1. Professional Knowledge	Demonstrates limited professional knowledge; relies heavily on outdated practices as opposed to current practices supported by research. Rarely engages students in academic, behavioral, and social/emotional learning experiences through the use of educational and/or clinical practices.	Demonstrates factual knowledge of the professional content and delivery and sometimes applies it to engage students in academic, behavioral, and social/emotional learning experiences through the use of educational and/or clinical practices.	Demonstrates sound knowledge and understanding of professional content and delivery by consistently engaging students in academic, behavioral, and social/emotional learning experiences through the use of educational and/or clinical practices that enable students to acquire knowledge and skills.	Demonstrates mastery of professional content and its delivery by engaging all students in academic, behavioral, and social/emotional learning experiences, through the use of educational and/or clinical practices, that enable students to synthesize knowledge and skills. Is able to model this element.
I-A-2. Child and Adolescent Development	Demonstrates little or no knowledge of child and adolescent development; typically develops one learning experience, and/or type of support or assistance for all students that does not adequately address intended outcomes.	Demonstrates general knowledge of child and adolescent development but does not apply this knowledge when providing differentiated learning experiences, support, and/or assistance that would enable all students—as opposed to just some—to move toward meeting intended outcomes.	Demonstrates knowledge of students' developmental levels and the different ways these students learn or behave by providing differentiated learning experiences, support, and/or assistance that enable all students to progress toward meeting intended outcomes.	Demonstrates expert knowledge of the developmental levels of individual students and students in the grade or subject more generally and uses this knowledge to differentiate and expand learning experiences, support, and/or types of assistance, enabling all students to make significant progress toward meeting stated outcomes. Is able to model this element.

I-A. Elements	Unsatisfactory	Needs Improvement	Proficient	Exemplary
1-A-3 Plan Development ¹	Develops or contributes to the development of plans that are not timely and/or not tailored to the needs of individual students; or, plans do not include appropriate supports or measurable outcomes that would enable students to meet the goals and objectives of the plan.	Develops or contributes to the timely development of plans that respond to some but not all relevant individual student needs, and/or plans that lack sufficient measurable outcomes or supports that enable students to meet all goals and objectives of the plan.	Develops or contributes to the timely development of well-structured plans with measurable outcomes that respond to all relevant individual student needs, and include supports that enable students to meet the goals or objectives of the plan.	Develops or contributes to the timely development of comprehensive, well-structured plans with measurable outcomes that respond to all relevant individual student needs, are coordinated with other plans relevant to those students, and include supports that enable students to meet all goals or objectives of the plan. Is able to model this element.
I-A-4. Well-Structured Lessons	Develops lessons (which may include individual and group activities or sessions) with inappropriate student engagement strategies, pacing, sequence, activities, materials, resources, and/or grouping.	Develops lessons (which may include individual and group activities or sessions) with only some elements of appropriate student engagement strategies, pacing, sequence, activities, materials, resources, and grouping.	Develops well-structured lessons (which may include individual and group activities or sessions) with challenging, measurable objectives and appropriate student engagement strategies, pacing, sequence, activities, materials, resources, and grouping.	Develops well-structured and highly engaging lessons (which may include individual and group activities and sessions) with challenging, measurable objectives and appropriate student engagement strategies, pacing, sequence, activities, materials, resources, and grouping to attend to every student's needs. Is able to model this element.

¹ "Plan" is used throughout this document to refer to a variety of plans, including but not limited to: lesson plans, unit plans, Individualized Education Programs (IEPs), Individualized Health Care Plans (IHCPs), Career Plans, and 504 Plans. The type of plan that an educator is responsible for depends on the educator being evaluated; both the educator and evaluator should understand and agree upon the definition relevant to the educator's role.

Indicator I-B. Assessment: Uses a variety of informal and formal methods of assessments to measure student learning, growth, and understanding to develop differentiated and enhanced learning experiences and improve future instruction.				
I-B. Elements	Unsatisfactory	Needs Improvement	Proficient	Exemplary
I-B-1. Variety of Assessment Methods	Administers assessments and/or collects only the data required by the school and/or measures only point-in-time student achievement or development.	May design and administer assessments and/or collect some data to measure student learning, growth, or development, but uses a limited range of methods.	Designs and administers assessments and/or collects data to measure student learning, growth, and/or development through a variety of methods, including informal and formal assessments and common interim assessments where applicable.	Uses an integrated, comprehensive assessment system, including informal and formal assessment methods and common interim assessments where applicable, to measure student learning, growth, and development. Is able to model this element.
I-B-2. Adjustment to Practice	Makes few adjustments to practice by identifying and/or implementing appropriate differentiated interventions, supports, and programs based on formal and informal assessments.	May organize and analyze some assessment results but only occasionally adjusts practice and identifies and/or implements appropriate differentiated interventions, supports, and programs for students.	Organizes and analyzes results from a variety of assessments to determine progress toward intended outcomes and uses these findings to adjust practice and identify and/or implement appropriate differentiated interventions, supports, and programs for students.	Organizes and analyzes results from a comprehensive system of assessments to determine progress toward intended outcomes and frequently uses these findings to adjust practice and identify and/or implement appropriate differentiated interventions, supports, or programs for individuals and groups of students and appropriate modifications of plans. Is able to model this element.

Indicator I-C. Analysis: Analyzes data from assessments, draws conclusions, and shares them appropriately.				
I-C. Elements	Unsatisfactory	Needs Improvement	Proficient	Exemplary
I-C-1. Analysis and Conclusions	Does not analyze data and/or draw conclusions from data beyond completing minimal requirements.	Draws conclusions from a limited analysis of data to inform student learning, growth, and development.	Individually and with colleagues, draws appropriate conclusions about programs, plans, and practices from a thorough analysis of a wide range of data to improve student learning, growth, and development.	Individually and with colleagues, draws appropriate, actionable conclusions about programs, plans, and practices from a thorough analysis of a wide range of data that improve short- and long-term planning decisions. Is able to model this element.
I-C-2. Sharing Conclusions With Colleagues	Rarely shares with colleagues conclusions about student progress and/or rarely seeks feedback from them about practices that will support improved student learning and/or development.	Only occasionally shares with colleagues conclusions about student progress and/or seeks feedback from them about practices that will support improved student learning and/or development.	Regularly shares with appropriate colleagues (e.g., classroom teachers, administrators, and professional support personnel) conclusions about student progress and seeks feedback from them about practices that will support improved student learning and/or development.	Establishes and implements a schedule and plan for regularly sharing with all appropriate colleagues (e.g., classroom teachers, administrators, and professional support personnel) conclusions and insights about student progress. Seeks and applies feedback from them about improved student learning and/or development. Is able to model this element.
I-C-3. Sharing Conclusions With Students and Families	Provides little or no feedback on student growth or progress except through minimally required reporting or provides inappropriate feedback that does not support students to grow and improve.	Provides some feedback about student growth or progress beyond required reports but rarely shares strategies for students to grow and improve.	Based on assessment results and/or other data, provides descriptive feedback and engages students and families in constructive conversation that focuses on student growth and improvement.	Establishes early, constructive feedback loops with students and families that create a dialogue about student growth, progress, and improvement. Is able to model this element.

Standard II: Teaching All Students. Promotes the learning and growth of all students through instructional practices that establish high expectations, create a safe and effective classroom environment, and demonstrate cultural proficiency.

Indicator II-A. Instruction: Uses instructional and clinical practices that reflect high expectations regarding content and quality of effort and work; engage all students; and are personalized to accommodate diverse learning styles, needs, interests, and levels of readiness.				
II-A. Elements	Unsatisfactory	Needs improvement	Proficient	Exemplary
II-A-1. Quality of Effort and Work	Establishes no or low expectations for student work and behavior and/or offers few supports to help students know what is expected of them.	May state high expectations for student work and behavior, but provides few exemplars and rubrics, or limited guided practice, and/or few other supports to help students know what is expected of them.	Consistently defines high expectations for student work and behavior, and the perseverance and effort required to produce it; often provides exemplars, rubrics, or guided practice, and/or models appropriate behaviors.	Consistently defines high expectations for student work and behavior and effectively supports students to set high expectations for each other to persevere and produce high-quality work. Is able to model this element.
II-A-2. Student Engagement	Uses instructional and/or clinical practices that leave most students uninvolved and/or passive.	Uses instructional and/or clinical practices that motivate and engage some students but leave others uninvolved and/or passive.	Consistently uses instructional and clinical practices that are likely to motivate and engage most students during the lesson, activity, or session.	Consistently uses instructional and clinical practices that typically motivate and engage most students during the lesson, activity, or session, and during independent work. Is able to model this element.
II-A-3. Meeting Diverse Needs	Uses limited and/or inappropriate practices and/or supports to accommodate differences.	May use some appropriate practices and/or supports to accommodate differences, but fails to address an adequate range of differences.	Uses appropriate practices, including tiered instruction, scaffolds, and other supports, to accommodate differences in learning styles, needs, interests, and levels of readiness, including those of students with disabilities and English learners.	Uses a varied repertoire of practices and/or supports to create structured opportunities for each student to meet or exceed expectations for growth and development. Is able to model this element.

Indicator II-B. Learning Environment: Creates and maintains a safe and collaborative learning environment that motivates students to take academic risks, challenge themselves, and claim ownership of their learning.				
II-B. Elements	Unsatisfactory	Needs Improvement	Proficient	Exemplary
II-B-1. Safe Learning Environment	Maintains a physical environment that is unsafe or does not support student learning. Uses inappropriate or ineffective rituals, routines, and/or responses to reinforce positive behavior or respond to behaviors that interfere with students' learning.	May create and maintain a safe physical environment but inconsistently maintains rituals, routines, and responses needed to prevent and/or stop behaviors that interfere with all students' learning.	Uses rituals, routines, and appropriate responses that create and maintain a safe physical and intellectual environment where students take academic risks and most behaviors that interfere with learning are prevented.	Uses rituals, routines, and proactive responses that create and maintain a safe physical and intellectual environment where students take academic risks and play an active role—individually and collectively—in preventing behaviors that interfere with learning. Is able to model this element.
II-B-2. Collaborative Learning Environment	Makes little effort to teach interpersonal, group, and communication skills or facilitate student work in groups, or such attempts are ineffective.	Teaches some interpersonal, group, and communication skills and provides some opportunities for students to work in groups.	Develops students' interpersonal, group, and communication skills and provides opportunities for students to learn in groups with diverse peers.	Teaches and reinforces interpersonal, group, and communication skills so that students seek out their peers as resources. Is able to model this practice.
II-B-2. Student Motivation	Directs all learning experiences, providing few, if any, opportunities for students to take risks or challenge themselves.	Creates some learning experiences that guide students to identify needs, ask for support, and challenge themselves to take risks.	Consistently creates learning experiences that guide students to identify their strengths, interests, and needs; ask for support when appropriate; take risks; and challenge themselves to succeed.	Consistently supports students to identify their strengths, interests, and needs; ask for support; take risks; challenge themselves; set learning goals; and monitor their own progress. Is able to model this element.

Indicator II-C. Cultural Proficiency: Actively creates and maintains an environment in which students' diverse backgrounds, identities, strengths, and challenges are respected.				
II-C. Elements	Unsatisfactory	Needs Improvement	Proficient	Exemplary
II-C-1. Respects Differences	Establishes an environment in which students demonstrate limited respect for individual differences.	Establishes an environment in which students generally demonstrate respect for individual differences.	Consistently uses strategies and practices that are likely to enable students to demonstrate respect for and affirm their own and others' differences related to background, identity, language, strengths, and challenges.	Establishes an environment in which students respect and affirm their own and others' differences and are supported to share and explore differences and similarities related to background, identity, language, strengths, and challenges. Is able to model this element.
II-C-2. Maintains Respectful Environment	Minimizes or ignores conflicts and/or responds in inappropriate ways.	Anticipates and responds appropriately to some conflicts or misunderstandings but ignores and/or minimizes others.	Anticipates and responds appropriately to conflicts or misunderstandings arising from differences in backgrounds, languages, and identities.	Anticipates and responds appropriately to conflicts or misunderstandings arising from differences in backgrounds, languages, and identities in ways that lead students to be able to do the same independently. Is able to model this element.

Indicator II-D. Expectations: Plans and implements lessons and/or supports that set clear and high expectations and also make knowledge, information, and/or supports accessible for all students.				
II-D. Elements	Unsatisfactory	Needs Improvement	Proficient	Exemplary
II-D-1. Clear Expectations	Does not make specific standards for student work, effort, interactions, and behavior clear to students.	May communicate specific standards for student work, effort, interactions, and behavior, but inconsistently or ineffectively enforces them.	Clearly communicates and consistently enforces specific standards for student work, effort, and behavior.	Clearly communicates and consistently enforces specific standards for student work, effort, interactions, and behavior so that most students are able to describe them and take ownership of meeting them. Is able to model this element.
II-D-2. High Expectations	Gives up on some students or communicates that some cannot accomplish challenging goals.	May tell students that a goal is challenging and that they need to work hard but does not model ways students can accomplish the goal through effective effort.	Effectively models and reinforces ways that students can set and accomplish challenging goals through effective effort, rather than having to depend on innate ability.	Effectively models and reinforces ways that students can consistently accomplish challenging goals through effective effort. Successfully challenges students' misconceptions about innate ability. Is able to model this element.
II-D-3. Access to Knowledge	Rarely adapts instruction, services, plans, communication, and/or assessments to make curriculum/supports accessible to all students for whom the educator has responsibility.	Occasionally adapts instruction, services, plans, communication, and/or assessments to make curriculum/supports accessible to all students for whom the educator has responsibility.	Consistently adapts instruction, services, plans, communication, and/or assessments to make curriculum/ supports accessible to all students for whom the educator has responsibility, including English learners and students with disabilities.	Individually and with colleagues, consistently adapts instruction, services, plans, communication, and/or assessments to make curriculum/supports accessible to all students for whom the educator has responsibility, including English learners and students with disabilities. Is able to model this element.

Standard III: Family and Community Engagement. Promotes the learning and growth of all students through effective partnerships with families, caregivers, community members, and organizations.

Indicator III-A. Engagement: Welcomes and encourages every family to become active participants in the classroom and school community.				
III-A. Elements	Unsatisfactory	Needs Improvement	Proficient	Exemplary
III-A-1. Parent/Family Engagement	Does not welcome families to become participants in the classroom and school community or actively discourages their participation.	Makes limited attempts to involve families in school and/or classroom activities, meetings, and planning.	Uses a variety of strategies to support families to participate actively and appropriately in the classroom and school community.	Successfully engages most families and sustains their active and appropriate participation in the classroom and school community. Is able to model this element.

Indicator III-B. Collaboration: Collaborates with families to create and implement strategies for supporting student learning and development both at home and at school.				
III-B. Elements	Unsatisfactory	Needs Improvement	Proficient	Exemplary
III-B-1. Learning Expectations	Does not inform parents about learning, behavior, and/or wellness expectations.	Sends home only a list of rules/expectations and an outline of the student learning, behavior, or wellness plan for the year.	Consistently provides parents with clear, user-friendly expectations for student learning, behavior, and/or wellness.	Successfully conveys to most parents clear, user-friendly student learning, behavior, and wellness expectations. Is able to model this element.

III-B. Elements	Unsatisfactory	Needs Improvement	Proficient	Exemplary
III-B-2. Student Support	Rarely, if ever, communicates with parents on ways to support learning and development at home or at school.	Sends home occasional suggestions on how parents can support learning and development at home or at school.	Regularly communicates with parents to create, share, and/or identify strategies for supporting learning and development at school and home.	Regularly communicates with parents to share and/or identify strategies for supporting learning and development at school and home. successfully encourages most families to use at least one of these strategies, and seeks out evidence of their impact. Is able to model this element.

Indicator III-C. Communication: Engages in regular, two-way, and culturally proficient communication with families about student learning, behavior and wellness.

III-C. Elements	Unsatisfactory	Needs Improvement	Proficient	Exemplary
III-C-1. Two-Way Communication	Rarely communicates with families except through required reports; rarely solicits or responds promptly to communications from families.	Relies primarily on sharing general information and announcements with families through one-way media and usually responds promptly to communications from families.	Regularly uses two-way communication with families about student learning, behavior, and wellness; responds promptly and carefully to communications from families.	Regularly uses a two-way system that supports frequent, proactive, and personalized communication with families about individual student learning, behavior, and wellness. Is able to model this element.
III-C-2. Culturally Proficient Communication	Makes few attempts to respond to different family cultural norms and/or responds inappropriately or disrespectfully.	May communicate respectfully and make efforts to take into account different families' home language, culture, and values, but does so inconsistently or does not demonstrate understanding and sensitivity to the differences.	Always communicates respectfully with families and demonstrates understanding of and sensitivity to different families' home language, culture, and values.	Always communicates respectfully with families and demonstrates understanding and appreciation of different families' home language, culture, and values. Is able to model this element.

Standard IV: Professional Culture. Promotes the learning and growth of all students through ethical, culturally proficient, skilled, and collaborative practice.

Indicator IV-A. Reflection: Demonstrates the capacity to reflect on and improve the educator's own practice, using informal means as well as meetings with teams and work groups to gather information, analyze data, examine issues, set meaningful goals, and develop new approaches in order to improve teaching and learning.				
IV-A. Elements	Unsatisfactory	Needs Improvement	Proficient	Exemplary
IV-A-1. Reflective Practice	Demonstrates limited reflection on practice and/or use of insights gained to improve practice.	May reflect on the effectiveness of instruction, supports, and interactions with students but not with colleagues and/or rarely uses insights gained to improve practice.	Regularly reflects on the effectiveness of instruction, supports, and interactions with students, both individually and with colleagues, and uses insights gained to improve practice and student outcomes.	Regularly reflects on the effectiveness of instruction, supports, and interactions with students, both individually and with colleagues; and uses and shares with colleagues insights gained to improve practice and student outcomes. Is able to model this element.
IV-A-2. Goal Setting	Participates passively in the goal-setting process and/or proposes goals that are vague or easy to reach.	Proposes one goal that is vague or easy to achieve and/or bases goals on a limited self-assessment and analysis of student data.	Proposes challenging, measurable professional practice, team, and student learning goals that are based on thorough self-assessment and analysis of student data.	Individually and with colleagues builds capacity to propose and monitor challenging, measurable goals based on thorough self-assessment and analysis of student data. Is able to model this element.

Indicator IV-B. Professional Growth: Actively pursues professional development and learning opportunities to improve quality of practice or build the expertise and experience to assume different instructional and leadership roles.				
IV-B. Elements	Unsatisfactory	Needs Improvement	Proficient	Exemplary
IV-B-1. Professional Learning and Growth	Participates in few, if any, professional development and learning opportunities to improve practice and/or applies little new learning to practice.	Participates only in required professional development and learning activities and/or inconsistently or inappropriately applies new learning to improve practice.	Consistently seeks out and applies, when appropriate, ideas for improving practice from supervisors, colleagues, professional development activities, and other resources to gain expertise and/or assume different instruction and leadership responsibilities.	Consistently seeks out professional development and learning opportunities that improve practice and build expertise of self and other educators in instruction, academic support, and leadership. Is able to model this element.

Indicator IV-C. Collaboration: Collaborates effectively with colleagues on a wide range of tasks.				
IV-C. Elements	Unsatisfactory	Needs Improvement	Proficient	Exemplary
IV-C-1. Professional Collaboration	Rarely and/or ineffectively collaborates with colleagues; conversations often lack focus on student performance and/or development.	Does not consistently collaborate with colleagues in ways that support productive team effort.	Consistently and effectively collaborates with colleagues through shared planning and/or informal conversation in such work as analyzing student performance and development and planning appropriate, comprehensive interventions at the classroom or school level.	Facilitates effective collaboration among colleagues through shared planning and/or informal conversation in such work as analyzing student performance and development and planning appropriate, comprehensive interventions at the classroom and school level. Is able to model this element.

IV-C. Elements	Unsatisfactory	Needs Improvement	Proficient	Exemplary
IV-C-2. Consultation	Regularly provides inappropriate advice; does not provide advice and expertise to general education teachers or other colleagues unless prompted to do so; and/or fails to offer advice when appropriate.	Provides advice and expertise to support general education teachers and other colleagues to create appropriate and effective academic, behavioral, and social/emotional learning experiences for only some students for whom responsibility is shared, or sometimes provides advice that is inappropriate or poorly customized.	Regularly provides appropriate advice and expertise that is customized to support general education teachers and other colleagues to create appropriate and effective academic, behavioral, and social/emotional learning experiences for students for whom responsibility is shared.	Utilizes a variety of means to regularly provide advice and expertise that is customized to support general education teachers and other colleagues to successfully create appropriate and effective academic, behavioral, and social/emotional learning experiences for students. Is able to model this element.

Indicator IV-D. Decision-Making: Becomes involved in schoolwide decision making, and takes an active role in school improvement planning.

IV-D. Elements	Unsatisfactory	Needs Improvement	Proficient	Exemplary
IV-D-1. Decision-Making	Participates in planning and decision making at the school, department, and/or grade level only when asked and rarely contributes relevant ideas or expertise.	May participate in planning and decision making at the school, department, and/or grade level but rarely contributes relevant ideas or expertise.	Consistently contributes relevant ideas and expertise to planning and decision making at the school, department, and/or grade level.	In planning and decision-making at the school, department, and/or grade level, consistently contributes ideas and expertise that are critical to school improvement efforts. Is able to model this element.

Indicator IV-E. Shared Responsibility: Shares responsibility for the performance of all students within the school.

IV-E. Elements	Unsatisfactory	Needs Improvement	Proficient	Exemplary
IV-E-1. Shared Responsibility	Rarely reinforces schoolwide behavior and learning expectations for all students and/or makes a limited contribution to their learning by rarely sharing responsibility for meeting their needs.	Within and beyond the classroom, inconsistently reinforces schoolwide behavior and learning expectations for all students, and/or makes a limited contribution to their learning by inconsistently sharing responsibility for meeting their needs.	Within and beyond the classroom, consistently reinforces school-wide behavior and learning expectations for all students, and contributes to their learning by sharing responsibility for meeting their needs.	Individually and with colleagues, develops strategies and actions that contribute to the learning and productive behavior of all students at the school. Is able to model this element.

Indicator IV-F. Professional Responsibilities: Is ethical and reliable, and meets routine responsibilities consistently.				
IV-F. Elements	Unsatisfactory	Needs Improvement	Proficient	Exemplary
IV-F-1. Judgment	Demonstrates poor judgment and/or discloses confidential student information inappropriately.	Sometimes demonstrates questionable judgment and/or inadvertently shares confidential information.	Demonstrates sound judgment reflecting integrity, honesty, fairness, and trustworthiness and protects student confidentiality appropriately.	Demonstrates sound judgment and acts appropriately to protect student confidentiality, rights and safety. Is able to model this element.
IV-F-2. Reliability & Responsibility	Frequently misses or is late to assignments, makes errors in records, and/or misses paperwork deadlines; frequently late or absent.	Occasionally misses or is late to assignments, completes work late, and/or makes errors in records.	Consistently fulfills professional responsibilities; is consistently punctual and reliable with paperwork, duties, and assignments; and is rarely late or absent from school.	Consistently fulfills all professional responsibilities to high standards. Is able to model this element.



Southwick Tolland Granville Regional School District

APPENDIX D

Educator Evaluation Forms

Teachers

(June 13, 2012)

Table of Contents

1. Evaluation Tracking Sheet
2. Self-Assessment Form
3. Goal Setting Form
4. Educator Plan Form
5. Evaluator Record of Evidence Form.
6. Educator Collection of Evidence Form
7. Formative Assessment Report Form
8. Formative Evaluation Report Form
9. Summative Evaluation Report Form
10. Educator Response Form

1. Evaluation Tracking Sheet

Educator—Name/Title: _____

Primary Evaluator—Name/Title: _____

Supervising Evaluator, if any—Name/Title/Role in evaluation: _____

School(s): _____

Educator Plan: Self-Directed Growth Plan Directed Growth Plan
 Developing Educator Plan Improvement Plan

Plan Duration: 2-Year One-Year Less than a year _____

Evaluation Step	Date(s)	Educator Initials	Evaluator(s) Initials
Self-Assessment received by evaluator			
Educator Plan development completed			
<input type="checkbox"/> Formative Assessment conference, if any ¹ <input type="checkbox"/> Formative Evaluation conference, if any ²			
<input type="checkbox"/> Formative Assessment Report completed <input type="checkbox"/> Formative Evaluation Report completed ³			
Educator response, if any, received by evaluator ⁴			
Summative Evaluation conference, if any			
Summative Evaluation Report completed			
Educator response, if any, received by evaluator			

¹ As per the Massachusetts Model System for Educator Evaluation Contract Language, evaluation conferences are required for ratings of Needs Improvement and Unsatisfactory but conferences may be requested by either the educator or evaluator for any Educator Plan. The conference may occur before or after the Report is completed; the sequence in the above table does not denote required chronological order.

² Formative Evaluation only occurs at the end of the first year of a two-year Self-Directed Growth Plan.

³ The educator's formative evaluation rating at the end of the first year of the two-year cycle shall be the same as the previous summative rating unless evidence demonstrates a significant change in performance. In such a case, the rating on the formative evaluation may change. Assigning ratings is optional during Formative Assessment.

⁴ An educator may provide written comments to the evaluator at any time using the Educator Response Form but 603 CMR 35.06 ensures that educators have an opportunity to respond to the Formative Assessment, Formative Evaluation, and Summative Evaluation in writing.

2. (1 of 2) Self-Assessment Form

Educator—Name/Title: _____

Primary Evaluator—Name/Title: _____

Supervising Evaluator, if any—Name/Title/Role in evaluation: _____

School(s): _____

Part 1: Analysis of Student Learning, Growth, and Achievement
Briefly summarize areas of strength and high-priority concerns for students under your responsibility for the upcoming school year. Cite evidence such as results from available assessments. This form should be individually submitted by educator, but Part 1 can also be used by individuals and/or teams who jointly review and analyze student data.
603 CMR 35.06 (2)(a)1

Blank area for writing the analysis of student learning, growth, and achievement.

Team, if applicable: _____

List Team Members below:

(2 Of 2) Self-Assessment Form

Educator—Name/Title: _____

Part 2: Assessment of Practice Against Performance Standards

Citing your district's performance rubric, briefly summarize areas of strength and high-priority areas for growth. Areas may target specific Standards, Indicators, or Elements, or span multiple Indicators or Elements within or across Standards. The form should be individually submitted by educator, but Part 2 can also be used by teams in preparation for proposing team goals.

603 CMR 35.06(2)(a)2

Team, if applicable: _____

List Team Members below:

_____	_____
_____	_____
_____	_____

Signature of Educator _____ Date _____

Signature of Evaluator _____ Date _____

* The evaluator's signature indicates that he or she has received a copy of the self-assessment form and the goal setting form with proposed goals. It does not denote approval of the goals.

3. Goal Setting Form

Educator—Name/Title: _____

Primary Evaluator—Name/Title: _____

Supervising Evaluator, if any—Name/Title/Role in evaluation: _____

School(s): _____

Check all that apply¹: Proposed Goals Final Goals Date: _____

A minimum of one student learning goal and one professional practice goal are required. **Team goals must be considered per 603 CMR 35.06(3)(b).** Attach pages as needed for additional goals or revisions made to proposed goals during the development of the Educator Plan.

Student Learning SMART Goal <i>Check whether goal is individual or team; write team name if applicable.</i>	Professional Practice SMART Goal <i>Check whether goal is individual or team; write team name if applicable.</i>
<input type="checkbox"/> Individual <input type="checkbox"/> Team: _____	<input type="checkbox"/> Individual <input type="checkbox"/> Team: _____

SMART: S=Specific and Strategic; M=Measurable; A=Action Oriented;
 R=Rigorous, Realistic, and Results-Focused; T=Timed and Tracked

¹ If proposed goals change during Plan Development, edits may be recorded directly on original sheet or revised goal may be recorded on a new sheet. If proposed goals are approved as written, a separate sheet is not required.

(2 of 2) Educator Plan Form

Educator—Name/Title: _____

Professional Practice Goal(s): Planned Activities <i>Describe actions the educator will take to attain the professional practice goal(s). Activities may apply to individual and/or team. Attach additional pages as needed.</i>		
Action	Supports/Resources from School/District ¹	Timeline or Frequency

This Educator Plan is “designed to provide educators with feedback for improvement, professional growth, and leadership,” is “aligned to statewide Standards and Indicators in 603 CMR 35.00 and local Performance Standards,” and “is consistent with district and school goals.” (see 603 CMR 35.06 (3)(d) and 603 CMR 35.06(3)(f).)

Signature of Evaluator _____ Date _____

Signature of Educator _____ Date _____

* As the evaluator retains final authority over goals to be included in an educator’s plan (see 603 CMR 35.06(3)(c)), the signature of the educator indicates that he or she has received the Goal Setting Form with the “Final Goal” box checked, indicating the evaluator’s approval of the goals. The educator’s signature does not necessarily denote agreement with the goals. Regardless of agreement with the final goals, signature indicates recognition that “It is the educator’s responsibility to attain the goals in the plan and to participate in any trainings and professional development provided through the state, district, or other providers in accordance with the Educator Plan.” (see 603 CMR 35.06(4))

¹ Must identify means for educator to receive feedback for improvement per 603 CMR 35.06(3)(d)

5. (1 of 2) Evaluator Record of Evidence Form

Educator—Name/Title: _____
 Primary Evaluator—Name/Title: _____
 Supervising Evaluator, if any—Name/Title/Role in evaluation: _____

 School(s): _____
 Academic Year: _____ Educator Plan and Duration: _____

Standards and Indicators for Effective Teaching Practice: Rubric Outline			
as per 603-CMR 35.03 <small>The evaluator should track collection to ensure that sufficient evidence has been gathered.</small>			
I. Curriculum, Planning, & Assessment	II. Teaching All Students	III. Family & Community Engagement	IV. Professional Culture
<input type="checkbox"/> I-A. Curriculum and Planning <input type="checkbox"/> I-B. Assessment <input type="checkbox"/> I-C. Analysis	<input type="checkbox"/> II-A. Instruction <input type="checkbox"/> II-B. Learning Environment <input type="checkbox"/> II-C. Cultural Proficiency <input type="checkbox"/> II-D. Expectations	<input type="checkbox"/> III-A. Engagement <input type="checkbox"/> III-B. Collaboration <input type="checkbox"/> III-C. Communication	<input type="checkbox"/> IV-A. Reflection <input type="checkbox"/> IV-B. Professional Growth <input type="checkbox"/> IV-C. Collaboration <input type="checkbox"/> IV-D. Decision-making <input type="checkbox"/> IV-E. Shared Responsibility <input type="checkbox"/> IV-F. Professional Responsibilities

* The Rubric Outline is intended to be used for citing Standards and Indicators. Evaluators should review the full rubric for analysis of evidence and determination of ratings

(2 of 2) Evaluator Record of Evidence Form

Educator: _____ Evaluator: _____

Date (Record date of collection or duration if applicable)	Source of Evidence (e.g., parent conference, observation)	Standard(s)/ Indicator(s) <i>Note Standard(s) and Indicator(s) to which evidence is tied</i>	Analysis of Evidence <i>Record notes, based on observations and artifacts of professional practice, including unannounced observations of practice of any duration, or other forms of evidence to support determining ratings on Standards as per 603 CMR 35.07</i>	Feedback Provided <i>Briefly record feedback given to educator (e.g., strengths recognized, suggestions for improvement)</i>
EX: 11/8/11	EX: unit plans, benchmark data	EX: I-B	EX: unit plans were appropriately modified after analysis of benchmark data to better reflect student performance at mid-point of semester.	EX: recognized strong adjustment to practice, suggested teacher collaborate with team on backward curriculum mapping

*note if classroom observations are announced or unannounced

6. Educator Collection of Evidence Form

Educator—Name/Title: _____

Primary Evaluator—Name/Title: _____

Supervising Evaluator, if any—Name/Title/Role in evaluation: _____

School(s): _____

Evidence pertains to (check all that apply)¹:

- Fulfillment of professional responsibilities and growth
- Evidence of outreach to and ongoing engagement with families
- Progress toward attaining student learning goal(s)
- Progress toward attaining professional practice goal(s)
- Other: _____

Summary of Evidence	
<i>Summarize the evidence compiled to be presented to evaluator with a brief analysis. Attach additional pages as needed.</i>	

Signature of Educator _____ Date _____

Signature of Evaluator _____ Date _____

Attachment(s) included

¹ Per 603 CMR 35.07(1)(c)1, "Evidence compiled and presented by the educator includes: 1. Evidence of fulfillment of professional responsibilities and growth, such as: self-assessments; peer collaboration; professional development linked to goals and or educator plans; contributions to the school community and professional culture; 2. Evidence of active outreach to and ongoing engagement with families." However, educator collection of evidence is not limited to these areas.

7. (1 of 2) Formative Assessment Report Form

Educator—Name/Title: _____

Primary Evaluator—Name/Title: _____

Supervising Evaluator, if any—Name/Title/Role in evaluation: _____

School(s): _____

Assessing¹:

Progress toward attaining goals

Performance on Standards

Both

Progress Toward Student Learning Goal(s)

Describe current level of progress and feedback for improvement. Attach additional pages as needed.

Progress Toward Professional Practice Goal(s)

Describe current level of progress. Attach additional pages as needed.

¹ As per 603 CMR 35.02 and 603 CMR 35.06(5), formative assessment shall mean the process used to assess progress towards attaining goals set forth in educator plans, performance on performance standards, or both.

(2 of 2) Formative Assessment Report Form

Educator—Name/Title: _____

Performance on Each Standard <i>Describe performance and feedback for improvement. Attach additional pages as needed.</i>	
I: Curriculum, Planning, & Assessment	
II: Teaching All Students	
III: Family & Community Engagement	
IV: Professional Culture	

The educator shall have the opportunity to respond in writing to the formative assessment as per 603 CMR 35.06(5)(c) on the Educator Response Form.

Signature of Evaluator _____ Date Completed: _____

Signature of Educator* _____ Date Received: _____

* Signature of the educator indicates acknowledgement of this report; it does not necessarily denote agreement with the contents of the report. Educators have the opportunity to respond to this report in writing and may use the Educator Report Form.

8. Formative Evaluation Report Form

(1 of 3)

* For educators on two-year Self-Directed Growth Plans at the end of Year One of the cycle

Educator—Name/Title: _____

Primary Evaluator—Name/Title: _____

Supervising Evaluator, if any—Name/Title/Role in evaluation: _____

School(s): _____

Assessing¹:

Progress toward attaining goals

Performance on Standards

Both

Progress Toward Student Learning Goal(s)

Attach additional pages as needed.

Did not meet Some progress Significant Progress Met Exceeded

Rationale, evidence, and feedback for improvement:

Progress Toward Professional Practice Goal(s)

Attach additional pages as needed.

Did not meet Some progress Significant Progress Met Exceeded

Rationale, evidence, and feedback for improvement:

¹ As per 603 CMR 35.02 and 603 CMR 35.06(5), formative evaluation shall mean the process used to assess progress towards attaining goals set forth in educator plans, performance on performance standards, or both.

(2 of 3) Formative Evaluation Report Form

Educator—Name/Title: _____

Evaluator is assigning same ratings as prior Summative Evaluation; no comments needed

Rating on Each Standard

I: Curriculum, Planning, & Assessment Unsatisfactory Needs Improvement Proficient Exemplary

Rationale, evidence, and feedback for improvement:

II: Teaching All Students Unsatisfactory Needs Improvement Proficient Exemplary

Rationale, evidence, and feedback for improvement:

III: Family/Community Engagement Unsatisfactory Needs Improvement Proficient Exemplary

Rationale, evidence, and feedback for improvement:

IV: Professional Culture Unsatisfactory Needs Improvement Proficient Exemplary

Rationale, evidence, and feedback for improvement:

Evaluator is assigning ratings that differ from prior Summative Evaluation; comments are required

(3 of 3) Formative Evaluation Report Form

Educator—Name/Title: _____

- Evaluator is assigning same ratings as prior Summative Evaluation; no comments needed
 Evaluator is assigning ratings that differ from prior Summative Evaluation; comments required

Overall Performance Rating			
<input type="checkbox"/> Unsatisfactory	<input type="checkbox"/> Needs Improvement	<input type="checkbox"/> Proficient	<input type="checkbox"/> Exemplary
<u>Rationale, evidence, and feedback for improvement:</u>			
Plan Moving Forward			
<input type="checkbox"/> Self-Directed Growth Plan	<input type="checkbox"/> Directed Growth Plan	<input type="checkbox"/> Improvement Plan	<input type="checkbox"/> Developing Educator Plan

The educator shall have the opportunity to respond in writing to the formative evaluation as per 603 CMR 35.06(5)(c) on the Educator Response Form.

Signature of Evaluator _____ Date Completed: _____

Signature of Educator* _____ Date Received: _____

* Signature of the educator indicates acknowledgement of this report; it does not necessarily denote agreement with the contents of the report. Educators have the opportunity to respond to this report in writing and may use the Educator Report Form.

9. (1 of 3) Summative Evaluation Report Form

Educator—Name/Title: _____

Primary Evaluator—Name/Title: _____

Supervising Evaluator, if any—Name/Title/Role in evaluation: _____

School(s): _____

Current Plan:

Self-Directed Growth Plan

Directed Growth Plan

Developing Educator Plan

Improvement Plan

Progress Toward Student Learning Goal(s)

Attach additional pages as needed.

Did not meet Some progress Significant Progress Met Exceeded

Rationale, evidence, and feedback for improvement:

Progress Toward Professional Practice Goal(s)

Attach additional pages as needed.

Did not meet Some progress Significant Progress Met Exceeded

Rationale, evidence, and feedback for improvement:

(2 of 3) Summative Evaluation Report Form

Educator—Name/Title: _____

Rating on Each Standard

I: Curriculum, Planning, & Assessment Unsatisfactory Needs Improvement Proficient Exemplary

Rationale, evidence, and feedback for improvement:

II: Teaching All Students Unsatisfactory Needs Improvement Proficient Exemplary

Rationale, evidence, and feedback for improvement:

III: Family/Community Engagement Unsatisfactory Needs Improvement Proficient Exemplary

Rationale, evidence, and feedback for improvement:

IV: Professional Culture Unsatisfactory Needs Improvement Proficient Exemplary

Rationale, evidence, and feedback for improvement:

(3 of 3) Summative Evaluation Report Form

Educator—Name/Title: _____

Overall Performance Rating

- Unsatisfactory Needs Improvement Proficient Exemplary

Rationale, evidence, and feedback for improvement:

Plan Moving Forward

- Self-Directed Growth Plan Directed Growth Plan Improvement Plan Developing Educator Plan

The educator shall have the opportunity to respond in writing to the summative evaluation as per 603 CMR 35.06(6) on the Educator Response Form.

Signature of Evaluator _____ Date Completed: _____

Signature of Educator* _____ Date Received: _____

* Signature of the educator indicates acknowledgement of this report; it does not necessarily denote agreement with the contents of the report. Educators have the opportunity to respond to this report in writing and may use the Educator Report Form.

